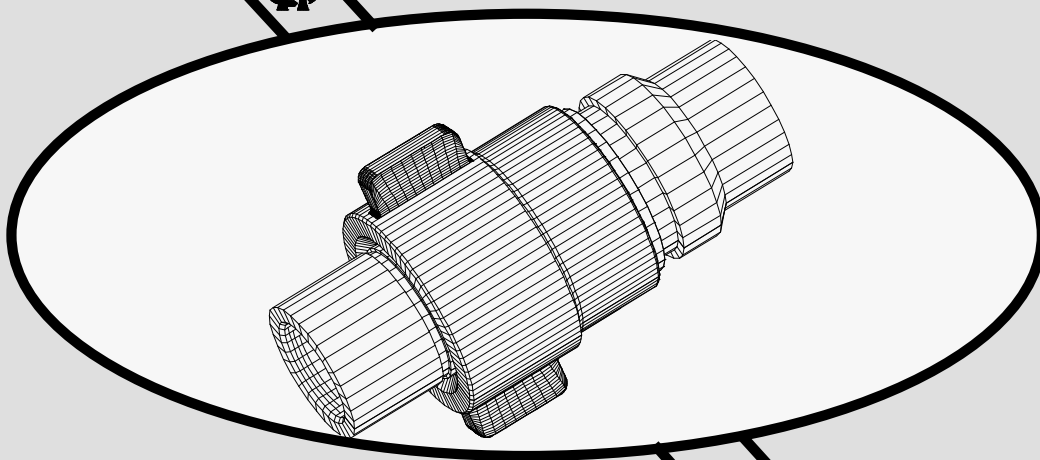


# BULK FLUID TRANSFER QUICK DISCONNECT

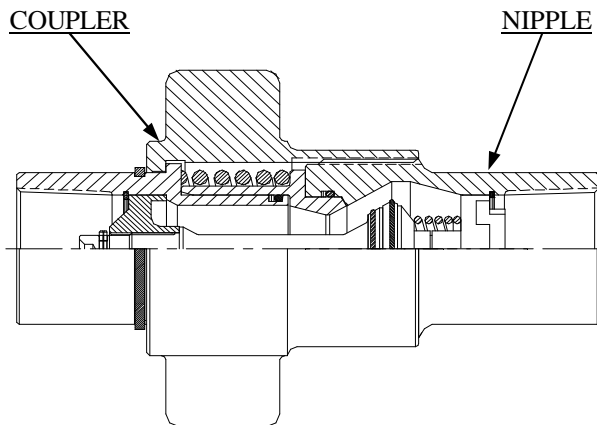


2935 ST. LOUIS AVENUE  
FORT WORTH, TX 76110

**E15TV SERIES  
NON-SPILL  
SELF SEALING**



## Thread To Connect - E15TV Series Couplings

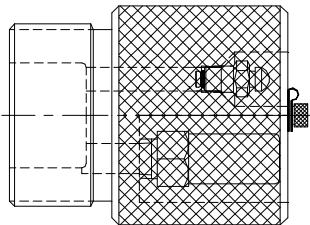


COUPLING ASSEMBLY

Hydraulics Inc. E15TV Couplings were specifically designed for use in transfer of refrigerant from transport to storage vessels. **CAUTION! User must assure compatability of coupling body and seal materials with fluid. Consult fluid manufacturer to determine compatibility.**

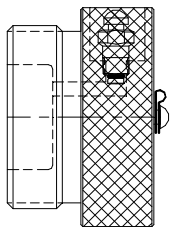
A key safety feature of this hand assembled coupling is that during Coupler and Nipple disconnect, the shut off valves close before the assembly seal vents. Virtually no fluid spill occurs. Should a valve not seal the two halves can be re-connected.

The Caps and Plugs including retention chains and rings are designed to limit Coupler and Nipple contamination and they provide safety features. Also the Coupling halves can be arranged on fluid lines to prevent liquid and vapor line cross-over errors at transfer hook up.



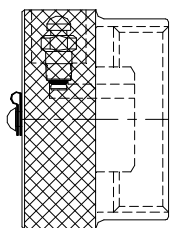
COUPLER PRESSURE RELIEF PLUG

When fully inserted, the Coupler Pressure Relief Plug is designed to open the Coupler valve and communicate refrigerant trapped in the transfer hose bore. Thermal induced pressure build-up is then controlled by the plugs 400 psi relief valve. The plug also guards against contaminants and a button exhaust valve allows trapped gas release before plug removal.



COUPLER SAFETY PLUG

The Coupler Safety Plug is optional to the Relief Plug. It guards against contaminants and is designed to prevent product loss should the coupler valve fail. The safety plug button exhaust valve allows release of trapped gas before plug removal.



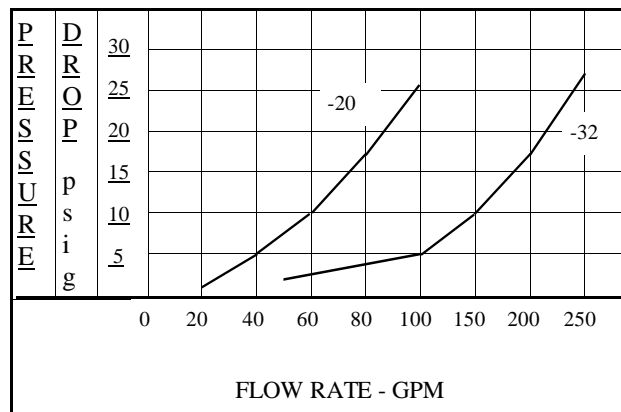
NIPPLE SAFETY CAP

The Nipple Safety Cap is a contaminant safeguard and is designed to prevent product loss should the nipple valve fail. The cap's button exhaust valve allows release of trapped gas before removing the cap.

E15TV-CN-20 Coupling

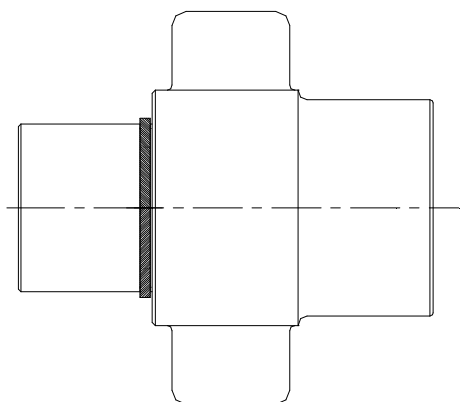
E15TV-CN-32 Coupling

PRESSURE DROP Vs. FLOW  
FLUID AT 150 SSU

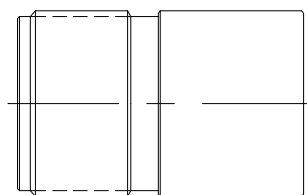




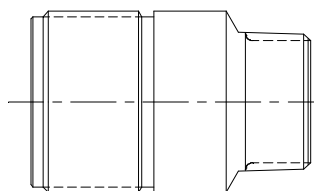
## Thread To Connect - E15TV Series Couplings



COUPLER



NIPPLE



NIPPLE ( CN-20-24 only)

### Pressure Limitations

Coupled & Uncoupled-1500 psi max.

Safety Caps & Plug-500 psi max.

### Operating Temp.

-40° F to + 150° F

### Seals (other available)

Fluorolon coated Neoprene o-rings

Teflon back-up rings

### Fluid Loss @ Disconnect

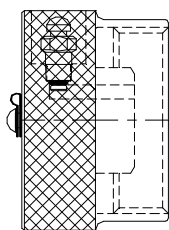
E15TV-CN-20 - 0.68ML

E15TV-CN-32 - 1.74 ML

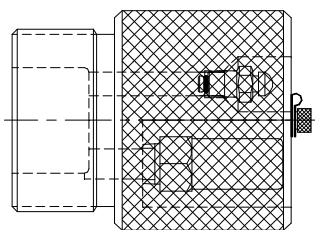
### Material-Coupling - Caps & Plugs

Bodies - Anodized Aluminum

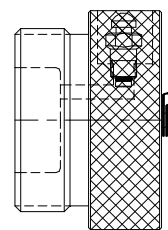
All other cadmium plated carbon steel.



NIPPLE SAFETY CAP  
CHAIN & RING



COUPLER PRESSURE RELIEF PLUG  
CHAIN & RING



COUPLER SAFETY PLUG  
CHAIN & RING

pub78

BODY SIZE	COUPLING PART No.	COUPLER PART No.	NIPPLE PART No.	SAFETY CAP PART No.	SAFETY PLUG PART No.	PRESSURE RELIEF PLUG PART No.
1-1/4"	E15TV-CN-20-24	E15TV-C-20	E15TV-N-20-24	E15TV-SC-20	E15TV-SP-20	E15TV-PRP-20
1-1/4"	E15TV-CN-20	E15TV-C-20	E15TV-N-20	E15TV-SC-20	E15TV-SP-20	E15TV-PRP-20
2.0"	E15TV-CN-32	E15TV-C-32	E15TV-N-32	E15TV-SC-32	E15TV-SP-32	E15TV-PRP-32

BODY SIZE	COUPLING PART No.	DIMENSIONS - INCHES				FEMALE PIPE THD SIZE	MALE PIPE THD SIZE	WEIGHT POUNDS
		COUPLING LENGTH	COUPLER LENGTH	NIPPLE LENGTH	ACROSS WING NUT			
1-1/4"	E15TV-CN-20-24	7.64	5.27	3.86	5.00	1-1/4:11-1/2	1-1/2:11-1/2	5
1-1/4"	E15TV-CN-20	7.64	5.27	3.86	5.00	1-1/4:11-1/2		5
2.0"	E15TV-CN-32	11.53	8.17	5.75	6.16	2:11-1/2		14

LTR	REVISION DESCRIPTION	DATE	APPROVED
A	ECN-486	8-17-00	

# NOTES:

## 1. PART NUMBERS:

E1STV-CN-20-24 COUPLING  
E1STV-C-20 COUPLER  
E1STV-N-20-24 NIPPLE  
E1STV-SP-20 SAFETY PLUG  
E1STV-SC-20 SAFETY CAP  
E1STV-PRP-20 PRESSURE RELIEF PLUG



2. MATERIAL: ALUMINUM BODY W/STEEL VALVES, NUT, RINGS AND SPRINGS.

3. PLATING: COUPLER & NIPPLE - COMBINATION OF HARD ANODIZE AND ANODIZE WITH BLACK DICHROMATE SEAL  
NUT & VALVE ASSEMBLIES - ZINC WITH DICHROMATE SEAL

4. SEALS: PRODUCT PRICED WITH NEOPRENE -- SUFFIX PART NUMBERS WITH COMPOUND LETTER DESIGNATOR FOR OTHER TYPE - B= BUNA-N, K= KALREZ

## 5. COUPLING OPERATING LIMITATIONS:

FLUID LOSS AT DISCONNECT: .68 ml.  
FLUID PRESSURE (MAX.) COUPLED - MINUS 28"Hg TO 1500 P.S.I.G.  
FLUID PRESSURE (MAX.) UNCOUPLED - MINUS 12"Hg TO 1500 P.S.I.G.  
TEMPERATURE RANGE - -40°F TO 150°F

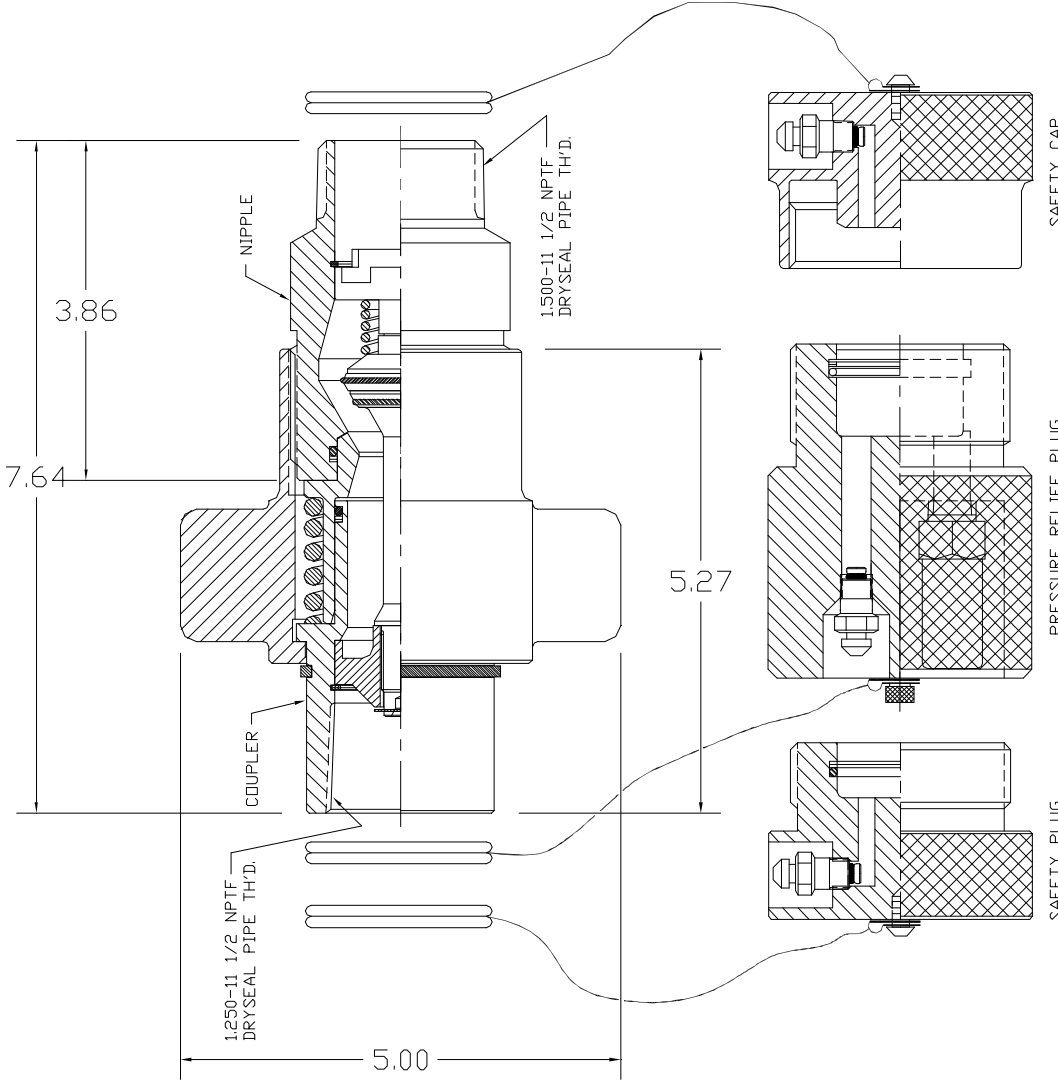
## 6. SAFETY CAP AND SAFETY PLUG OPERATING LIMITATIONS:

FLUID PRESSURE (MAX.) - 500 P.S.I.G.  
TEMPERATURE RANGE - -40°F TO 150°F

## 7. PRESSURE RELIEF PLUG VALVE SET AT 400 P.S.I.

## 8. WEIGHTS

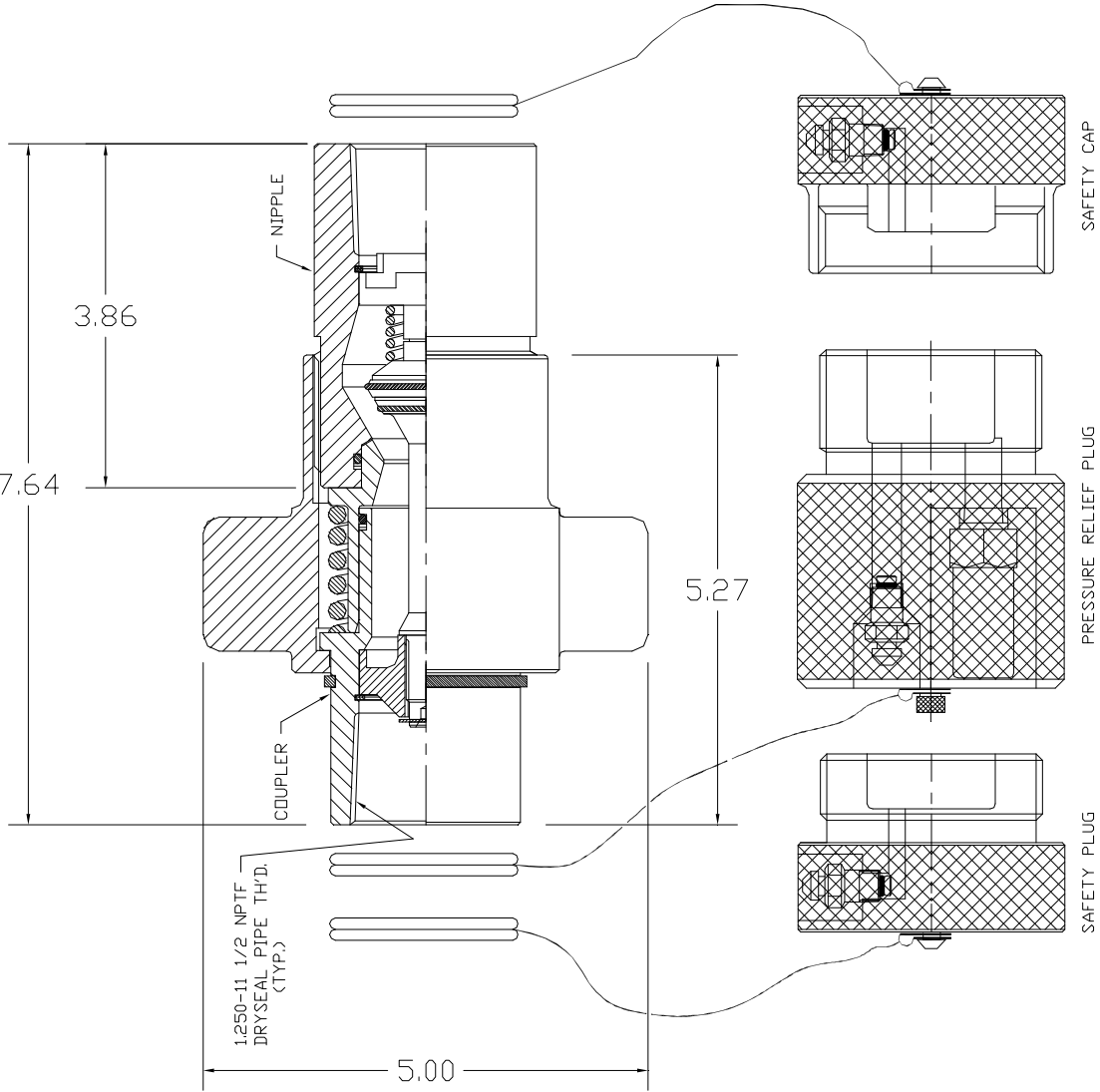
COUPLER: 4 lbs.  
NIPPLE: 1 lb.  
SAFETY CAP: 1 lb.  
SAFETY PLUG: 1 lb.  
PRESSURE RELIEF PLUG: 1 lb. 3 oz.



△ MUST BE FULLY INSERTED FOR PROPER FUNCTION

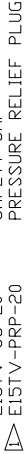
SIGNATURE:	DATE	TITLE	PROJ. LEADER
DRAWN: S. WESTOVER	6-14-98	E1STV SERIES SELF-SEAL COUPLING	PROJ. LEADER
CHECKED: D.F. HOWETH	6-14-98	1-1/4" EQUIVALENT BORE SIZE W/SEALS	PROJ. LEADER
APPROVED: D.F. HOWETH	6-14-98		
CAD FILE: 07H00270	6-14-98		
UNLESS OTHERWISE NOTED			
1. DIMENSIONS ARE IN INCHES			
2. DIMENSIONS ARE IN MILLIMETERS			
3. DIMENSIONS ARE IN MILLIMETERS			
4. DIMENSIONS ARE IN MILLIMETERS			
5. DIMENSIONS ARE IN MILLIMETERS			
6. DIMENSIONS ARE IN MILLIMETERS			
7. DIMENSIONS ARE IN MILLIMETERS			
8. DIMENSIONS ARE IN MILLIMETERS			
9. DIMENSIONS ARE IN MILLIMETERS			
10. DIMENSIONS ARE IN MILLIMETERS			
11. DIMENSIONS ARE IN MILLIMETERS			
12. DIMENSIONS ARE IN MILLIMETERS			
13. DIMENSIONS ARE IN MILLIMETERS			
14. DIMENSIONS ARE IN MILLIMETERS			
15. DIMENSIONS ARE IN MILLIMETERS			
16. DIMENSIONS ARE IN MILLIMETERS			
17. DIMENSIONS ARE IN MILLIMETERS			
18. DIMENSIONS ARE IN MILLIMETERS			
19. DIMENSIONS ARE IN MILLIMETERS			
20. DIMENSIONS ARE IN MILLIMETERS			
21. DIMENSIONS ARE IN MILLIMETERS			
22. DIMENSIONS ARE IN MILLIMETERS			
23. DIMENSIONS ARE IN MILLIMETERS			
24. DIMENSIONS ARE IN MILLIMETERS			
25. DIMENSIONS ARE IN MILLIMETERS			
26. DIMENSIONS ARE IN MILLIMETERS			
27. DIMENSIONS ARE IN MILLIMETERS			
28. DIMENSIONS ARE IN MILLIMETERS			
29. DIMENSIONS ARE IN MILLIMETERS			
30. DIMENSIONS ARE IN MILLIMETERS			
31. DIMENSIONS ARE IN MILLIMETERS			
32. DIMENSIONS ARE IN MILLIMETERS			
33. DIMENSIONS ARE IN MILLIMETERS			
34. DIMENSIONS ARE IN MILLIMETERS			
35. DIMENSIONS ARE IN MILLIMETERS			
36. DIMENSIONS ARE IN MILLIMETERS			
37. DIMENSIONS ARE IN MILLIMETERS			
38. DIMENSIONS ARE IN MILLIMETERS			
39. DIMENSIONS ARE IN MILLIMETERS			
40. DIMENSIONS ARE IN MILLIMETERS			
41. DIMENSIONS ARE IN MILLIMETERS			
42. DIMENSIONS ARE IN MILLIMETERS			
43. DIMENSIONS ARE IN MILLIMETERS			
44. DIMENSIONS ARE IN MILLIMETERS			
45. DIMENSIONS ARE IN MILLIMETERS			
46. DIMENSIONS ARE IN MILLIMETERS			
47. DIMENSIONS ARE IN MILLIMETERS			
48. DIMENSIONS ARE IN MILLIMETERS			
49. DIMENSIONS ARE IN MILLIMETERS			
50. DIMENSIONS ARE IN MILLIMETERS			
51. DIMENSIONS ARE IN MILLIMETERS			
52. DIMENSIONS ARE IN MILLIMETERS			
53. DIMENSIONS ARE IN MILLIMETERS			
54. DIMENSIONS ARE IN MILLIMETERS			
55. DIMENSIONS ARE IN MILLIMETERS			
56. DIMENSIONS ARE IN MILLIMETERS			
57. DIMENSIONS ARE IN MILLIMETERS			
58. DIMENSIONS ARE IN MILLIMETERS			
59. DIMENSIONS ARE IN MILLIMETERS			
60. DIMENSIONS ARE IN MILLIMETERS			
61. DIMENSIONS ARE IN MILLIMETERS			
62. DIMENSIONS ARE IN MILLIMETERS			
63. DIMENSIONS ARE IN MILLIMETERS			
64. DIMENSIONS ARE IN MILLIMETERS			
65. DIMENSIONS ARE IN MILLIMETERS			
66. DIMENSIONS ARE IN MILLIMETERS			
67. DIMENSIONS ARE IN MILLIMETERS			
68. DIMENSIONS ARE IN MILLIMETERS			
69. DIMENSIONS ARE IN MILLIMETERS			
70. DIMENSIONS ARE IN MILLIMETERS			
71. DIMENSIONS ARE IN MILLIMETERS			
72. DIMENSIONS ARE IN MILLIMETERS			
73. DIMENSIONS ARE IN MILLIMETERS			
74. DIMENSIONS ARE IN MILLIMETERS			
75. DIMENSIONS ARE IN MILLIMETERS			
76. DIMENSIONS ARE IN MILLIMETERS			
77. DIMENSIONS ARE IN MILLIMETERS			
78. DIMENSIONS ARE IN MILLIMETERS			
79. DIMENSIONS ARE IN MILLIMETERS			
80. DIMENSIONS ARE IN MILLIMETERS			
81. DIMENSIONS ARE IN MILLIMETERS			
82. DIMENSIONS ARE IN MILLIMETERS			
83. DIMENSIONS ARE IN MILLIMETERS			
84. DIMENSIONS ARE IN MILLIMETERS			
85. DIMENSIONS ARE IN MILLIMETERS			
86. DIMENSIONS ARE IN MILLIMETERS			
87. DIMENSIONS ARE IN MILLIMETERS			
88. DIMENSIONS ARE IN MILLIMETERS			
89. DIMENSIONS ARE IN MILLIMETERS			
90. DIMENSIONS ARE IN MILLIMETERS			
91. DIMENSIONS ARE IN MILLIMETERS			
92. DIMENSIONS ARE IN MILLIMETERS			
93. DIMENSIONS ARE IN MILLIMETERS			
94. DIMENSIONS ARE IN MILLIMETERS			
95. DIMENSIONS ARE IN MILLIMETERS			
96. DIMENSIONS ARE IN MILLIMETERS			
97. DIMENSIONS ARE IN MILLIMETERS			
98. DIMENSIONS ARE IN MILLIMETERS			
99. DIMENSIONS ARE IN MILLIMETERS			
100. DIMENSIONS ARE IN MILLIMETERS			

LT#	REVISION DESCRIPTION	DATE	APPROVED
A	ECN-486	8-17-00	



NOTES:

- PART NUMBERS:  
E1STV-CN-20  
E1STV-C-20  
E1STV-N-20  
E1STV-SP-20  
E1STV-SC-20  
E1STV-PRP-20



2. MATERIAL: ALUMINUM BODY W/STEEL VALVES, NUT, RINGS AND SPRINGS.

3. PLATING: COUPLER & NIPPLE - COMBINATION OF HARD ANODIZE AND ANODIZE WITH BLACK DICHROMATE SEAL NUT & VALVE ASSEMBLIES - ZINC WITH DICHROMATE SEAL

4. SEALS: PRODUCT PRICED WITH NEOPRENE -- SUFFIX PART NUMBERS WITH COMPOUND LETTER DESIGNATOR FOR OTHER TYPE - B= BUNA-N, K= KALREZ

5. COUPLING OPERATING LIMITATIONS:

FLUID LOSS AT DISCONNECT: .68 ml.  
FLUID PRESSURE (MAX.) COUPLED - MINUS 28"Hg TO 1500 P.S.I.G.  
FLUID PRESSURE (MAX.) UNCOUPLED - MINUS 12"Hg TO 1500 P.S.I.G.  
TEMPERATURE RANGE - -40°F TO 150°F

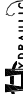
6. SAFETY CAP AND SAFETY PLUG OPERATING LIMITATIONS:  
FLUID PRESSURE (MAX.) - 500 P.S.I.G.  
TEMPERATURE RANGE - -40°F TO 150°F

7. PRESSURE RELIEF PLUG VALVE SET AT 400 P.S.I.

8. WEIGHTS

COUPLER: 4 lbs.  
NIPPLE: 1 lb.  
SAFETY CAP: 1 lb.  
SAFETY PLUG: 1 lb.  
PRESSURE RELIEF PLUG: 1 lb. 3 oz.

⚠ MUST BE FULLY INSERTED FOR PROPER FUNCTION.

SIGNATURE:		DATE:	2095 ST. LOUIS AVE. FT. WORTH, TEXAS 76115	
DRAWN: S. WESTOVER		6-8-00		
CHECKED: D.F. HOWETH		6-16-00		
APPROVED: D.F. HOWETH		6-16-00		
CAD FILE: 07100271		6-16-00		
UNLESS OTHERWISE NOTED			TITLE: FIFTY SEVEN SELF-SIZE COUPLING 1-1/4" EQUIVALENT BORE SIZE W/SEALS	
1. SURFACE FINISH: ALL SURFACES TO BE FINISHED TO A MAX. 32 RMS UNLESS OTHERWISE SPECIFIED 2. DIMENSIONS: ALL DIMENSIONS ARE IN INCHES UNLESS OTHERWISE SPECIFIED 3. TOLERANCES: FRACTIONS: 1/16" 3/32" 1/8" 3/16" 1/4" 3/8" 1/2" 5/8" 3/4" 1" 1 1/2" 2" 3" 4" 6" 8" 12" 18" 24" 30" 36" 48" 60" 72" 96" 120" 144" 180" 240" 300" 360" 480" 600" 720" 960" 1200" 1440" 1800" 2400" 3000" 3600" 4800" 6000" 7200" 9600" 12000" 14400" 18000" 24000" 30000" 36000" 48000" 60000" 72000" 96000" 120000" 144000" 180000" 240000" 300000" 360000" 480000" 600000" 720000" 960000" 1200000" 1440000" 1800000" 2400000" 3000000" 3600000" 4800000" 6000000" 7200000" 9600000" 12000000" 14400000" 18000000" 24000000" 30000000" 36000000" 48000000" 60000000" 72000000" 96000000" 120000000" 144000000" 180000000" 240000000" 300000000" 360000000" 480000000" 600000000" 720000000" 960000000" 1200000000" 1440000000" 1800000000" 2400000000" 3000000000" 3600000000" 4800000000" 6000000000" 7200000000" 9600000000" 12000000000" 14400000000" 18000000000" 24000000000" 30000000000" 36000000000" 48000000000" 60000000000" 72000000000" 96000000000" 120000000000" 144000000000" 180000000000" 240000000000" 300000000000" 360000000000" 480000000000" 600000000000" 720000000000" 960000000000" 1200000000000" 1440000000000" 1800000000000" 2400000000000" 3000000000000" 3600000000000" 4800000000000" 6000000000000" 7200000000000" 9600000000000" 12000000000000" 14400000000000" 18000000000000" 24000000000000" 30000000000000" 36000000000000" 48000000000000" 60000000000000" 72000000000000" 96000000000000" 120000000000000" 144000000000000" 180000000000000" 240000000000000" 300000000000000" 360000000000000" 480000000000000" 600000000000000" 720000000000000" 960000000000000" 1200000000000000" 1440000000000000" 1800000000000000" 2400000000000000" 3000000000000000" 3600000000000000" 4800000000000000" 6000000000000000" 7200000000000000" 9600000000000000" 12000000000000000" 14400000000000000" 18000000000000000" 24000000000000000" 30000000000000000" 36000000000000000" 48000000000000000" 60000000000000000" 72000000000000000" 96000000000000000" 120000000000000000" 144000000000000000" 180000000000000000" 240000000000000000" 300000000000000000" 360000000000000000" 480000000000000000" 600000000000000000" 720000000000000000" 960000000000000000" 1200000000000000000" 1440000000000000000" 1800000000000000000" 2400000000000000000" 3000000000000000000" 3600000000000000000" 4800000000000000000" 6000000000000000000" 7200000000000000000" 9600000000000000000" 12000000000000000000" 14400000000000000000" 18000000000000000000" 24000000000000000000" 30000000000000000000" 36000000000000000000" 48000000000000000000" 60000000000000000000" 72000000000000000000" 96000000000000000000" 120000000000000000000" 144000000000000000000" 180000000000000000000" 240000000000000000000" 300000000000000000000" 360000000000000000000" 480000000000000000000" 600000000000000000000" 720000000000000000000" 960000000000000000000" 1200000000000000000000" 1440000000000000000000" 1800000000000000000000" 2400000000000000000000" 3000000000000000000000" 3600000000000000000000" 4800000000000000000000" 6000000000000000000000" 7200000000000000000000" 9600000000000000000000" 12000000000000000000000" 14400000000000000000000" 18000000000000000000000" 24000000000000000000000" 30000000000000000000000" 36000000000000000000000" 48000000000000000000000" 60000000000000000000000" 72000000000000000000000" 96000000000000000000000" 120000000000000000000000" 144000000000000000000000" 180000000000000000000000" 240000000000000000000000" 300000000000000000000000" 360000000000000000000000" 480000000000000000000000" 600000000000000000000000" 720000000000000000000000" 960000000000000000000000" 1200000000000000000000000" 1440000000000000000000000" 1800000000000000000000000" 2400000000000000000000000" 3000000000000000000000000" 3600000000000000000000000" 4800000000000000000000000" 6000000000000000000000000" 7200000000000000000000000" 9600000000000000000000000" 12000000000000000000000000" 14400000000000000000000000" 18000000000000000000000000" 24000000000000000000000000" 30000000000000000000000000" 36000000000000000000000000" 48000000000000000000000000" 60000000000000000000000000" 72000000000000000000000000" 96000000000000000000000000" 120000000000000000000000000" 144000000000000000000000000" 180000000000000000000000000" 240000000000000000000000000" 300000000000000000000000000" 360000000000000000000000000" 480000000000000000000000000" 600000000000000000000000000" 720000000000000000000000000" 960000000000000000000000000" 1200000000000000000000000000" 1440000000000000000000000000" 1800000000000000000000000000" 2400000000000000000000000000" 3000000000000000000000000000" 3600000000000000000000000000" 4800000000000000000000000000" 6000000000000000000000000000" 7200000000000000000000000000" 9600000000000000000000000000" 12000000000000000000000000000" 14400000000000000000000000000" 18000000000000000000000000000" 24000000000000000000000000000" 30000000000000000000000000000" 36000000000000000000000000000" 48000000000000000000000000000" 60000000000000000000000000000" 72000000000000000000000000000" 96000000000000000000000000000" 120000000000000000000000000000" 144000000000000000000000000000" 180000000000000000000000000000" 240000000000000000000000000000" 300000000000000000000000000000" 360000000000000000000000000000" 480000000000000000000000000000" 600000000000000000000000000000" 720000000000000000000000000000" 960000000000000000000000000000" 1200000000000000000000000000000" 1440000000000000000000000000000" 1800000000000000000000000000000" 2400000000000000000000000000000" 3000000000000000000000000000000" 3600000000000000000000000000000" 4800000000000000000000000000000" 6000000000000000000000000000000" 7200000000000000000000000000000" 9600000000000000000000000000000" 12000000000000000000000000000000" 14400000000000000000000000000000" 18000000000000000000000000000000" 24000000000000000000000000000000" 30000000000000000000000000000000" 36000000000000000000000000000000" 48000000000000000000000000000000" 60000000000000000000000000000000" 72000000000000000000000000000000" 96000000000000000000000000000000" 120000000000000000000000000000000" 144000000000000000000000000000000" 180000000000000000000000000000000" 240000000000000000000000000000000" 300000000000000000000000000000000" 360000000000000000000000000000000" 480000000000000000000000000000000" 600000000000000000000000000000000" 720000000000000000000000000000000" 960000000000000000000000000000000" 1200000000000000000000000000000000" 1440000000000000000000000000000000" 1800000000000000000000000000000000" 2400000000000000000000000000000000" 3000000000000000000000000000000000" 3600000000000000000000000000000000" 4800000000000000000000000000000000" 6000000000000000000000000000000000" 7200000000000000000000000000000000" 9600000000000000000000000000000000" 12000000000000000000000000000000000" 14400000000000000000000000000000000" 18000000000000000000000000000000000" 24000000000000000000000000000000000" 30000000000000000000000000000000000" 36000000000000000000000000000000000" 48000000000000000000000000000000000" 60000000000000000000000000000000000" 72000000000000000000000000000000000" 96000000000000000000000000000000000" 120000000000000000000000000000000000" 144000000000000000000000000000000000" 180000000000000000000000000000000000" 240000000000000000000000000000000000" 300000000000000000000000000000000000" 360000000000000000000000000000000000" 480000000000000000000000000000000000" 600000000000000000000000000000000000" 720000000000000000000000000000000000" 960000000000000000000000000000000000" 1200000000000000000000000000000000000" 1440000000000000000000000000000000000" 1800000000000000000000000000000000000" 2400000000000000000000000000000000000" 3000000000000000000000000000000000000" 3600000000000000000000000000000000000" 4800000000000000000000000000000000000" 6000000000000000000000000000000000000" 7200000000000000000000000000000000000" 9600000000000000000000000000000000000" 12000000000000000000000000000000000000" 14400000000000000000000000000000000000" 18000000000000000000000000000000000000" 24000000000000000000000000000000000000" 30000000000000000000000000000000000000" 36000000000000000000000000000000000000" 48000000000000000000000000000000000000" 60000000000000000000000000000000000000" 72000000000000000000000000000000000000" 96000000000000000000000000000000000000" 120000000000000000000000000000000000000" 144000000000000000000000000000000000000" 180000000000000000000000000000000000000" 240000000000000000000000000000000000000" 300000000000000000000000000000000000000" 360000000000000000000000000000000000000" 480000000000000000000000000000000000000" 600000000000000000000000000000000000000" 720000000000000000000000000000000000000" 960000000000000000000000000000000000000" 1200000000000000000000000000000000000000" 1440000000000000000000000000000000000000" 1800000000000000000000000000000000000000" 2400000000000000000000000000000000000000" 3000000000000000000000000000000000000000" 3600000000000000000000000000000000000000" 4800000000000000000000000000000000000000" 6000000000000000000000000000000000000000" 7200000000000000000000000000000000000000" 9600000000000000000000000000000000000000" 12000000000000000000000000000000000000000" 14400000000000000000000000000000000000000" 18000000000000000000000000000000000000000" 24000000000000000000000000000000000000000" 300" 36000000000000000000000000000000000000000" 48000000000000000000000000000000000000000" 600" 72000000000000000000000000000000000000000" 96000000000000000000000000000000000000000" 1200" 144000000000000000000000000000000000000000" 1800" 2400" 3000" 3600" 4800" 6000" 7200" 9600" 12000" 14400" 18000" 24000" 300" 36000" 48000" 600" 72000" 96000" 1200" 144000" 1800" 2400" 3000" 3600" 4800" 6000" 7200" 9600" 12000" 14400" 18000" 24000" 300" 36000" 48000" 600" 72000" 96000" 1200" 144000" 1800" 2400" 3000" 3600" 4800" 6000" 7200" 9600" 12000" 14400" 18000" 24000" 300" 360000000				

LTR	REVISION DESCRIPTION	DATE	APPROVED
A	ECN-486	8-17-00	
B	ADDED FLAG NOTES	10-10-01	

# NOTES:

## 1. PART NUMBERS:

- E15TV-CN-32 COUPLING
- E15TV-C-32 COUPLER
- E15TV-N-32 NIPPLE
- E15TV-SP-32 SAFETY PLUG
- E15TV-SC-32 SAFETY CAP
- E15TV-PRP-32 PRESSURE RELIEF PLUG

2. MATERIAL: ALUMINUM BODY W/STEEL VALVES, NUT, RINGS AND SPRINGS.

3. PLATING: COUPLER & NIPPLE - COMBINATION OF HARD ANODIZE AND ANODIZE WITH BLACK DICHROMATE SEAL  
NUT & VALVE ASSEMBLIES - ZINC WITH DICHROMATE SEAL

4. SEALS: PRODUCT PRICED WITH NEOPRENE --- SUFFIX PART NUMBERS WITH COMPOUND LETTER DESIGNATOR FOR OTHER TYPE - B= BUNA-N, K= KALREZ

## 5. COUPLING OPERATING LIMITATIONS:

FLUID LOSS AT DISCONNECT: 174 mL  
FLUID PRESSURE (MAX.) COUPLED - MINUS 28"Hg TO 1500 P.S.I.G.  
FLUID PRESSURE (MAX.) UNCOUPLED - MINUS 12"Hg TO 1500 P.S.I.G.  
TEMPERATURE RANGE - -40°F TO 150°F

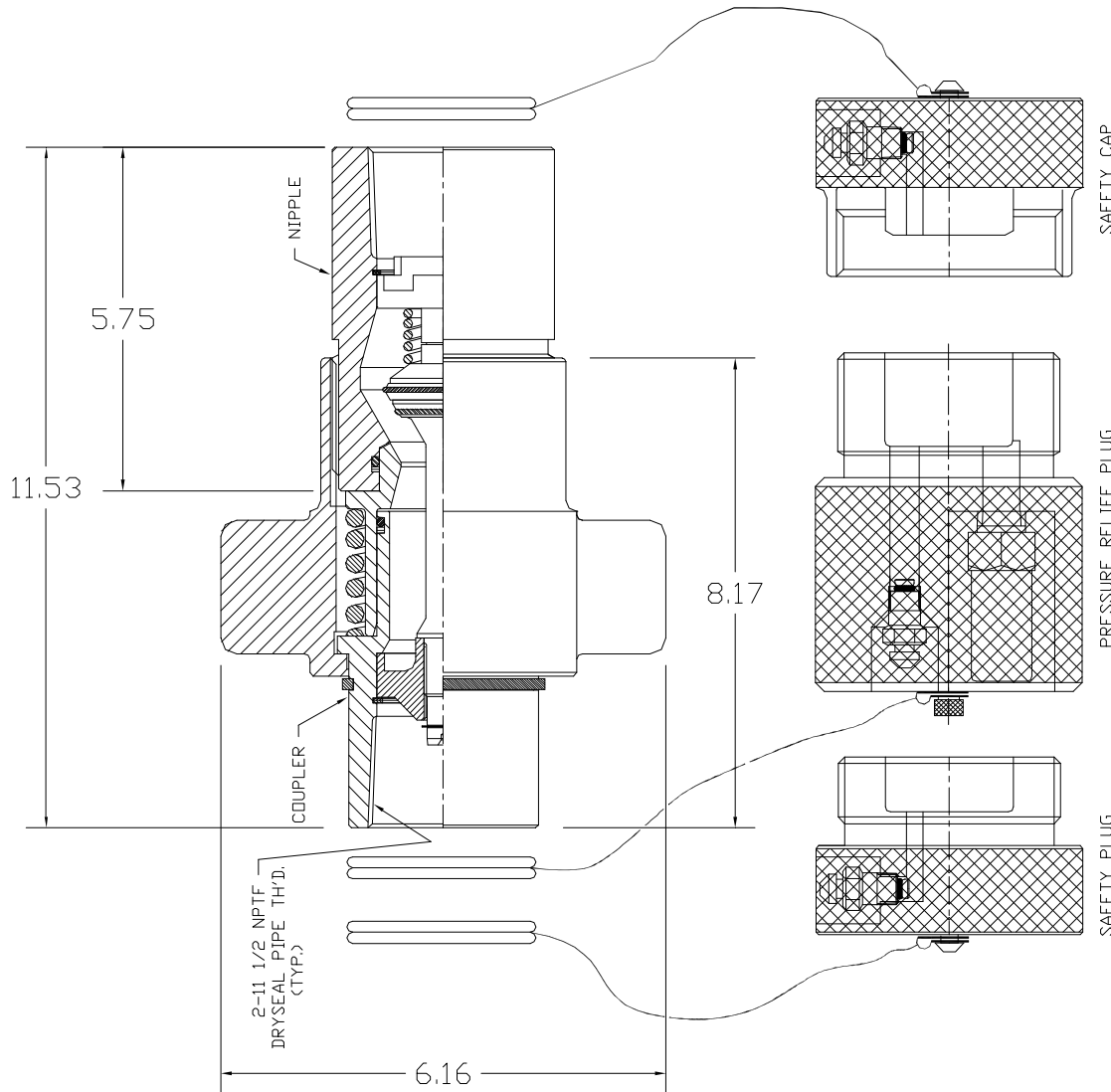
## 6. SAFETY CAP AND SAFETY PLUG OPERATING LIMITATIONS:

FLUID PRESSURE (MAX.) - 500 P.S.I.G.  
TEMPERATURE RANGE - -40°F TO 150°F

## 7. PRESSURE RELIEF PLUG VALVE SET AT 400 P.S.I.

## 8. WEIGHTS

- COUPLER: 12 lbs.
- NIPPLE: 3 lbs. 11 oz.
- SAFETY CAP: 2 lbs. 10 oz.
- SAFETY PLUG: 2 lbs. 11 oz.
- PRESSURE RELIEF PLUG: 5 lbs.



SAFETY PLUG & CAP  
POPPET VALVES TO  
VENT TRAPPED GAS  
BEFORE REMOVING  
THESE ARTICLES.

MUST BE FULLY INSERTED IN  
COUPLER TO LIMIT PRESSURE  
IN HOSE BORE TO 400 P.S.I.

SAFETY CAP

PRESSURE RELIEF PLUG

SAFETY PLUG

SIGNATURE:		DATE:	
DRAWN: S. WESTOVER	6-8-00		
CHECKED: D.F. HOWETH	6-28-00		
APPROVED: D.F. HOWETH	6-26-00		
CAD FILE: 07H00272	6-26-00		
UNLESS OTHERWISE NOTED			
1. BORE ALL BARS			
2. BORE ALL BARS			
3. BORE ALL BARS			
4. ALL TOLERANCES			
5. UNLESS OTHERWISE NOTED			
6. TOLERANCES			
7. UNLESS OTHERWISE NOTED			
8. UNLESS OTHERWISE NOTED			
9. UNLESS OTHERWISE NOTED			
10. UNLESS OTHERWISE NOTED			
11. UNLESS OTHERWISE NOTED			
12. UNLESS OTHERWISE NOTED			
13. UNLESS OTHERWISE NOTED			
14. UNLESS OTHERWISE NOTED			
15. UNLESS OTHERWISE NOTED			
16. UNLESS OTHERWISE NOTED			
17. UNLESS OTHERWISE NOTED			
18. UNLESS OTHERWISE NOTED			
19. UNLESS OTHERWISE NOTED			
20. UNLESS OTHERWISE NOTED			
21. UNLESS OTHERWISE NOTED			
22. UNLESS OTHERWISE NOTED			
23. UNLESS OTHERWISE NOTED			
24. UNLESS OTHERWISE NOTED			
25. UNLESS OTHERWISE NOTED			
26. UNLESS OTHERWISE NOTED			
27. UNLESS OTHERWISE NOTED			
28. UNLESS OTHERWISE NOTED			
29. UNLESS OTHERWISE NOTED			
30. UNLESS OTHERWISE NOTED			
31. UNLESS OTHERWISE NOTED			
32. UNLESS OTHERWISE NOTED			
33. UNLESS OTHERWISE NOTED			
34. UNLESS OTHERWISE NOTED			
35. UNLESS OTHERWISE NOTED			
36. UNLESS OTHERWISE NOTED			
37. UNLESS OTHERWISE NOTED			
38. UNLESS OTHERWISE NOTED			
39. UNLESS OTHERWISE NOTED			
40. UNLESS OTHERWISE NOTED			
41. UNLESS OTHERWISE NOTED			
42. UNLESS OTHERWISE NOTED			
43. UNLESS OTHERWISE NOTED			
44. UNLESS OTHERWISE NOTED			
45. UNLESS OTHERWISE NOTED			
46. UNLESS OTHERWISE NOTED			
47. UNLESS OTHERWISE NOTED			
48. UNLESS OTHERWISE NOTED			
49. UNLESS OTHERWISE NOTED			
50. UNLESS OTHERWISE NOTED			
51. UNLESS OTHERWISE NOTED			
52. UNLESS OTHERWISE NOTED			
53. UNLESS OTHERWISE NOTED			
54. UNLESS OTHERWISE NOTED			
55. UNLESS OTHERWISE NOTED			
56. UNLESS OTHERWISE NOTED			
57. UNLESS OTHERWISE NOTED			
58. UNLESS OTHERWISE NOTED			
59. UNLESS OTHERWISE NOTED			
60. UNLESS OTHERWISE NOTED			
61. UNLESS OTHERWISE NOTED			
62. UNLESS OTHERWISE NOTED			
63. UNLESS OTHERWISE NOTED			
64. UNLESS OTHERWISE NOTED			
65. UNLESS OTHERWISE NOTED			
66. UNLESS OTHERWISE NOTED			
67. UNLESS OTHERWISE NOTED			
68. UNLESS OTHERWISE NOTED			
69. UNLESS OTHERWISE NOTED			
70. UNLESS OTHERWISE NOTED			
71. UNLESS OTHERWISE NOTED			
72. UNLESS OTHERWISE NOTED			
73. UNLESS OTHERWISE NOTED			
74. UNLESS OTHERWISE NOTED			
75. UNLESS OTHERWISE NOTED			
76. UNLESS OTHERWISE NOTED			
77. UNLESS OTHERWISE NOTED			
78. UNLESS OTHERWISE NOTED			
79. UNLESS OTHERWISE NOTED			
80. UNLESS OTHERWISE NOTED			
81. UNLESS OTHERWISE NOTED			
82. UNLESS OTHERWISE NOTED			
83. UNLESS OTHERWISE NOTED			
84. UNLESS OTHERWISE NOTED			
85. UNLESS OTHERWISE NOTED			
86. UNLESS OTHERWISE NOTED			
87. UNLESS OTHERWISE NOTED			
88. UNLESS OTHERWISE NOTED			
89. UNLESS OTHERWISE NOTED			
90. UNLESS OTHERWISE NOTED			
91. UNLESS OTHERWISE NOTED			
92. UNLESS OTHERWISE NOTED			
93. UNLESS OTHERWISE NOTED			
94. UNLESS OTHERWISE NOTED			
95. UNLESS OTHERWISE NOTED			
96. UNLESS OTHERWISE NOTED			
97. UNLESS OTHERWISE NOTED			
98. UNLESS OTHERWISE NOTED			
99. UNLESS OTHERWISE NOTED			
100. UNLESS OTHERWISE NOTED			
101. UNLESS OTHERWISE NOTED			
102. UNLESS OTHERWISE NOTED			
103. UNLESS OTHERWISE NOTED			
104. UNLESS OTHERWISE NOTED			
105. UNLESS OTHERWISE NOTED			
106. UNLESS OTHERWISE NOTED			
107. UNLESS OTHERWISE NOTED			
108. UNLESS OTHERWISE NOTED			
109. UNLESS OTHERWISE NOTED			
110. UNLESS OTHERWISE NOTED			
111. UNLESS OTHERWISE NOTED			
112. UNLESS OTHERWISE NOTED			
113. UNLESS OTHERWISE NOTED			
114. UNLESS OTHERWISE NOTED			
115. UNLESS OTHERWISE NOTED			
116. UNLESS OTHERWISE NOTED			
117. UNLESS OTHERWISE NOTED			
118. UNLESS OTHERWISE NOTED			
119. UNLESS OTHERWISE NOTED			
120. UNLESS OTHERWISE NOTED			
121. UNLESS OTHERWISE NOTED			
122. UNLESS OTHERWISE NOTED			
123. UNLESS OTHERWISE NOTED			
124. UNLESS OTHERWISE NOTED			
125. UNLESS OTHERWISE NOTED			
126. UNLESS OTHERWISE NOTED			
127. UNLESS OTHERWISE NOTED			
128. UNLESS OTHERWISE NOTED			
129. UNLESS OTHERWISE NOTED			
130. UNLESS OTHERWISE NOTED			
131. UNLESS OTHERWISE NOTED			
132. UNLESS OTHERWISE NOTED			
133. UNLESS OTHERWISE NOTED			
134. UNLESS OTHERWISE NOTED			
135. UNLESS OTHERWISE NOTED			
136. UNLESS OTHERWISE NOTED			
137. UNLESS OTHERWISE NOTED			
138. UNLESS OTHERWISE NOTED			
139. UNLESS OTHERWISE NOTED			
140. UNLESS OTHERWISE NOTED			
141. UNLESS OTHERWISE NOTED			
142. UNLESS OTHERWISE NOTED			
143. UNLESS OTHERWISE NOTED			
144. UNLESS OTHERWISE NOTED			
145. UNLESS OTHERWISE NOTED			
146. UNLESS OTHERWISE NOTED			
147. UNLESS OTHERWISE NOTED			
148. UNLESS OTHERWISE NOTED			
149. UNLESS OTHERWISE NOTED			
150. UNLESS OTHERWISE NOTED			
151. UNLESS OTHERWISE NOTED			
152. UNLESS OTHERWISE NOTED			
153. UNLESS OTHERWISE NOTED			
154. UNLESS OTHERWISE NOTED			
155. UNLESS OTHERWISE NOTED			
156. UNLESS OTHERWISE NOTED			
157. UNLESS OTHERWISE NOTED			
158. UNLESS OTHERWISE NOTED			
159. UNLESS OTHERWISE NOTED			
160. UNLESS OTHERWISE NOTED			
161. UNLESS OTHERWISE NOTED			
162. UNLESS OTHERWISE NOTED			
163. UNLESS OTHERWISE NOTED			
164. UNLESS OTHERWISE NOTED			
165. UNLESS OTHERWISE NOTED			
166. UNLESS OTHERWISE NOTED			
167. UNLESS OTHERWISE NOTED			
168. UNLESS OTHERWISE NOTED			
169. UNLESS OTHERWISE NOTED			
170. UNLESS OTHERWISE NOTED			
171. UNLESS OTHERWISE NOTED			
172. UNLESS OTHERWISE NOTED			
173. UNLESS OTHERWISE NOTED			
174. UNLESS OTHERWISE NOTED			
175. UNLESS OTHERWISE NOTED			
176. UNLESS OTHERWISE NOTED			
177. UNLESS OTHERWISE NOTED			
178. UNLESS OTHERWISE NOTED			
179. UNLESS OTHERWISE NOTED			
180. UNLESS OTHERWISE NOTED			
181. UNLESS OTHERWISE NOTED			
182. UNLESS OTHERWISE NOTED			
183. UNLESS OTHERWISE NOTED			
184. UNLESS OTHERWISE NOTED			
185. UNLESS OTHERWISE NOTED			
186. UNLESS OTHERWISE NOTED			
187. UNLESS OTHERWISE NOTED			
188. UNLESS OTHERWISE NOTED			
189. UNLESS OTHERWISE NOTED			
190. UNLESS OTHERWISE NOTED			
191. UNLESS OTHERWISE NOTED			
192. UNLESS OTHERWISE NOTED			
193. UNLESS OTHERWISE NOTED			
194. UNLESS OTHERWISE NOTED			
195. UNLESS OTHERWISE NOTED			
196. UNLESS OTHERWISE NOTED			
197. UNLESS OTHERWISE NOTED			
198. UNLESS OTHERWISE NOTED			
199. UNLESS OTHERWISE NOTED			
200. UNLESS OTHERWISE NOTED			
201. UNLESS OTHERWISE NOTED			
202. UNLESS OTHERWISE NOTED			
203. UNLESS OTHERWISE NOTED			
204. UNLESS OTHERWISE NOTED			
205. UNLESS OTHERWISE NOTED			
206. UNLESS OTHERWISE NOTED			
207. UNLESS OTHERWISE NOTED			
208. UNLESS OTHERWISE NOTED			
209. UNLESS OTHERWISE NOTED			
210. UNLESS OTHERWISE NOTED			
211. UNLESS OTHERWISE NOTED			
212. UNLESS OTHERWISE NOTED			
213. UNLESS OTHERWISE NOTED			
214. UNLESS OTHERWISE NOTED			
215. UNLESS OTHERWISE NOTED			
216. UNLESS OTHERWISE NOTED			
217. UNLESS OTHERWISE NOTED			
218. UNLESS OTHERWISE NOTED			
219. UNLESS OTHERWISE NOTED			
220. UNLESS OTHERWISE NOTED			
221. UNLESS OTHERWISE NOTED			
222. UNLESS OTHERWISE NOTED			
223. UNLESS OTHERWISE NOTED			
224. UNLESS OTHERWISE NOTED			
225. UNLESS OTHERWISE NOTED			
226. UNLESS OTHERWISE NOTED			
227. UNLESS OTHERWISE NOTED			
228. UNLESS OTHERWISE NOTED			
229. UNLESS OTHERWISE NOTED			
230. UNLESS OTHERWISE NOTED			
231. UNLESS OTHERWISE NOTED			
232. UNLESS OTHERWISE NOTED			
233. UNLESS OTHERWISE NOTED			
234. UNLESS OTHERWISE NOTED			
235. UNLESS OTHERWISE NOTED			
236. UNLESS OTHERWISE NOTED			
237. UNLESS OTHERWISE NOTED			
238. UNLESS OTHERWISE NOTED			
239. UNLESS OTHERWISE NOTED			
240. UNLESS OTHERWISE NOTED			
241. UNLESS OTHERWISE NOTED			
242. UNLESS OTHERWISE NOTED			
243. UNLESS OTHERWISE NOTED			
244. UNLESS OTHERWISE NOTED			
245. UNLESS OTHERWISE NOTED			
246. UNLESS OTHERWISE NOTED			
247. UNLESS OTHERWISE NOTED			
248. UNLESS OTHERWISE NOTED			
249. UNLESS OTHERWISE NOTED			
250. UNLESS OTHERWISE NOTED			
251. UNLESS OTHERWISE NOTED			
252. UNLESS OTHERWISE NOTED			
253. UNLESS OTHERWISE NOTED			
254. UNLESS OTHERWISE NOTED			
255. UNLESS OTHERWISE NOTED			
256. UNLESS OTHERWISE NOTED			
257. UNLESS OTHERWISE NOTED			
258. UNLESS OTHERWISE NOTED			
259. UNLESS OTHERWISE NOTED			
260. UNLESS OTHERWISE NOTED			
261. UNLESS OTHERWISE NOTED			
262. UNLESS OTHERWISE NOTED			
263. UNLESS OTHERWISE NOTED			
264. UNLESS OTHERWISE NOTED			
265. UNLESS OTHERWISE NOTED			
266. UNLESS OTHERWISE NOTED			
267. UNLESS OTHERWISE NOTED			
268. UNLESS OTHERWISE NOTED			
269. UNLESS OTHERWISE NOTED			
270. UNLESS OTHERWISE NOTED			
271. UNLESS OTHERWISE NOTED			
272. UNLESS OTHERWISE NOTED			
273. UNLESS OTHERWISE NOTED			
274. UNLESS OTHERWISE NOTED			
275. UNLESS OTHERWISE NOTED			
276. UNLESS OTHERWISE NOTED			
277. UNLESS OTHERWISE NOTED			
278. UNLESS OTHERWISE NOTED			
279. UNLESS OTHERWISE NOTED			
280. UNLESS OTHERWISE NOTED			
281. UNLESS OTHERWISE NOTED			
282. UNLESS OTHERWISE NOTED			
283. UNLESS OTHERWISE NOTED			
284. UNLESS OTHERWISE NOTED			
285. UNLESS OTHERWISE NOTED			
286. UNLESS OTHERWISE NOTED			
287. UNLESS OTHERWISE NOTED			
288. UNLESS OTHERWISE NOTED			
289. UNLESS OTHERWISE NOTED			
290. UNLESS OTHERWISE NOTED			
291. UNLESS OTHERWISE NOTED			
292. UNLESS OTHERWISE NOTED			
293. UNLESS OTHERWISE NOTED			
294. UNLESS OTHERWISE NOTED			
295. UNLESS OTHERWISE NOTED			
296. UNLESS OTHERWISE NOTED			
297. UNLESS OTHERWISE NOTED			
298. UNLESS OTHERWISE NOTED			
299. UNLESS OTHERWISE NOTED			
300. UNLESS OTHERWISE NOTED			
301. UNLESS OTHERWISE NOTED			
302. UNLESS OTHERWISE NOTED			
303. UNLESS OTHERWISE NOTED			
304. UNLESS OTHERWISE NOTED			
305. UNLESS OTHERWISE NOTED			
306. UNLESS OTHERWISE NOTED			
307. UNLESS OTHERWISE NOTED			
308. UNLESS OTHERWISE NOTED			
309. UNLESS OTHERWISE NOTED			
310. UNLESS OTHERWISE NOTED			
311. UNLESS OTHERWISE NOTED			
312. UNLESS OTHERWISE NOTED			
313. UNLESS OTHERWISE NOTED			
314. UNLESS OTHERWISE NOTED			
315. UNLESS OTHERWISE NOTED			
316. UNLESS OTHERWISE NOTED			
317. UNLESS OTHERWISE NOTED			
318. UNLESS OTHERWISE NOTED			
319. UNLESS OTHERWISE NOTED			
320. UNLESS OTHERWISE NOTED			
321. UNLESS OTHERWISE NOTED			
322. UNLESS OTHERWISE NOTED			
323. UNLESS OTHERWISE NOTED			
324. UNLESS OTHERWISE NOTED			
325. UNLESS OTHERWISE NOTED			
326. UNLESS OTHERWISE NOTED			
327. UNLESS OTHERWISE NOTED			
328. UNLESS OTHERWISE NOTED			
329. UNLESS OTHERWISE NOTED			
330. UNLESS OTHERWISE NOTED			
331. UNLESS OTHERWISE NOTED			
332. UNLESS OTHERWISE NOTED			
333. UNLESS OTHERWISE NOTED			
334. UNLESS OTHERWISE NOTED			
335. UNLESS OTHERWISE NOTED			
336. UNLESS OTHERWISE NOTED			
337. UNLESS OTHERWISE NOTED			
338. UNLESS OTHERWISE NOTED			
339. UNLESS OTHERWISE NOTED			
340. UNLESS OTHERWISE NOTED			
341. UNLESS OTHERWISE NOTED			
342. UNLESS OTHERWISE NOTED			
343. UNLESS OTHERWISE NOTED			
344. UNLESS OTHERWISE NOTED			
345. UNLESS OTHERWISE NOTED			
346. UNLESS OTHERWISE NOTED			
347. UNLESS OTHERWISE NOTED			
348. UNLESS OTHERWISE NOTED			
349. UNLESS OTHERWISE NOTED			
350. UNLESS OTHERWISE NOTED			
351. UNLESS OTHERWISE NOTED			
352. UNLESS OTHERWISE NOTED			
353. UNLESS OTHERWISE NOTED			
354. UNLESS OTHERWISE NOTED			
355. UNLESS OTHERWISE NOTED			
356. UNLESS OTHERWISE NOTED			
357. UNLESS OTHERWISE NOTED			
358. UNLESS OTHERWISE NOTED			
359. UNLESS OTHERWISE NOTED			
360. UNLESS OTHERWISE NOTED			
361. UNLESS OTHERWISE NOTED			
362. UNLESS OTHERWISE NOTED			
363. UNLESS OTHERWISE NOTED			
364. UNLESS OTHERWISE NOTED			
365. UNLESS OTHERWISE NOTED			
366. UNLESS OTHERWISE NOTED			
367. UNLESS OTHERWISE NOTED			
368. UNLESS OTHERWISE NOTED			
369. UNLESS OTHERWISE NOTED			
370. UNLESS OTHERWISE NOTED			
371. UNLESS OTHERWISE NOTED			
372. UNLESS OTHERWISE NOTED			
373. UNLESS OTHERWISE NOTED			
374. UNLESS OTHERWISE NOTED			
375. UNLESS OTHERWISE NOTED			
376. UNLESS OTHERWISE NOTED			
377. UNLESS OTHERWISE NOTED			
378. UNLESS OTHERWISE NOTED			
379. UNLESS OTHERWISE NOTED			
380. UNLESS OTHERWISE NOTED			
381. UNLESS OTHERWISE NOTED			
382. UNLESS OTHERWISE NOTED			
383. UNLESS OTHERWISE NOTED			
384. UNLESS OTHERWISE NOTED			
385. UNLESS OTHERWISE NOTED			
386. UNLESS OTHERWISE NOTED			
387. UNLESS OTHERWISE NOTED			
388. UNLESS OTHERWISE NOTED			
389. UNLESS OTHERWISE NOTED			
390. UNLESS OTHERWISE NOTED			
391. UNLESS OTHERWISE NOTED			
392. UNLESS OTHERWISE NOTED			
393. UNLESS OTHERWISE NOTED			
394. UNLESS OTHERWISE NOTED			
395. UNLESS OTHERWISE NOTED			
396. UNLESS OTHERWISE NOTED			
397. UNLESS OTHERWISE NOTED			
398. UNLESS OTHERWISE NOTED			
399. UNLESS OTHERWISE NOTED			
400. UNLESS OTHERWISE NOTED			
401. UNLESS OTHERWISE NOTED			
402. UNLESS OTHERWISE NOTED			
403. UNLESS OTHERWISE NOTED			
404. UNLESS OTHERWISE NOTED			
405. UNLESS OTHERWISE NOTED			
406. UNLESS OTHERWISE NOTED			
407. UNLESS OTHERWISE NOTED			
408. UNLESS OTHERWISE NOTED			
409. UNLESS OTHERWISE NOTED			
410. UNLESS OTHERWISE NOTED			
411. UNLESS OTHERWISE NOTED			
412. UNLESS OTHERWISE NOTED			
413. UNLESS OTHERWISE NOTED			
414. UNLESS OTHERWISE NOTED			
415. UNLESS OTHERWISE NOTED			
416. UNLESS OTHERWISE NOTED			
417. UNLESS OTHERWISE NOTED			
418. UNLESS OTHERWISE NOTED			
419. UNLESS OTHERWISE NOTED			
420. UNLESS OTHERWISE NOTED			
421. UNLESS OTHERWISE NOTED			
422. UNLESS OTHERWISE NOTED			
423. UNLESS OTHERWISE NOTED			
424. UNLESS OTHERWISE NOTED			
425. UNLESS OTHERWISE NOTED			
426. UNLESS OTHERWISE NOTED			
427. UNLESS OTHERWISE NOTED			
428. UNLESS OTHERWISE NOTED			
429. UNLESS OTHERWISE NOTED			
430. UNLESS OTHERWISE NOTED			
431. UNLESS OTHERWISE NOTED			
432. UNLESS OTHERWISE NOTED			
433. UNLESS OTHERWISE NOTED			
434. UNLESS OTHERWISE NOTED			
435. UNLESS OTHERWISE NOTED			
436. UNLESS OTHERWISE NOTED			
437. UNLESS OTHERWISE NOTED			
438. UNLESS OTHERWISE NOTED			
439. UNLESS OTHERWISE NOTED			
440. UNLESS OTHERWISE NOTED			
441. UNLESS OTHERWISE NOTED			
442. UNLESS OTHERWISE NOTED			
443. UNLESS OTHERWISE NOTED			
444. UNLESS OTHERWISE NOTED			
445. UNLESS OTHERWISE NOTED			
446. UNLESS OTHERWISE NOTED			
447. UNLESS OTHERWISE NOTED			
448. UNLESS OTHERWISE NOTED			
449. UNLESS OTHERWISE NOTED			
450. UNLESS OTHERWISE NOTED			
451. UNLESS OTHERWISE NOTED			
452. UNLESS OTHERWISE NOTED			
453. UNLESS OTHERWISE NOTED			
454. UNLESS OTHERWISE NOTED			
455. UNLESS OTHERWISE NOTED			
456. UNLESS OTHERWISE NOTED			
457. UNLESS OTHERWISE NOTED			
458. UNLESS OTHERWISE NOTED			
459. UNLESS OTHERWISE NOTED			
460. UNLESS OTHERWISE NOTED			
461. UNLESS OTHERWISE NOTED			
462. UNLESS OTHERWISE NOTED			
463. UNLESS OTHERWISE NOTED			
464. UNLESS OTHERWISE NOTED			
465. UNLESS OTHERWISE NOTED			
466. UNLESS OTHERWISE NOTED			
467. UNLESS OTHERWISE NOTED			
468. UNLESS OTHERWISE NOTED			
469. UNLESS OTHERWISE NOTED			
470. UNLESS OTHERWISE NOTED			
471. UNLESS OTHERWISE NOTED			
472. UNLESS OTHERWISE NOTED			
473. UNLESS OTHERWISE NOTED			
474. UNLESS OTHERWISE NOTED			
475. UNLESS OTHERWISE NOTED			
476. UNLESS OTHERWISE NOTED			
477. UNLESS OTHERWISE NOTED			
478. UNLESS OTHERWISE NOTED			
479. UNLESS OTHERWISE NOTED			
480. UNLESS OTHERWISE NOTED			
481. UNLESS OTHERWISE NOTED			
482. UNLESS OTHERWISE NOTED			
483. UNLESS OTHERWISE NOTED			
484. UNLESS OTHERWISE NOTED			
485. UNLESS OTHERWISE NOTED			
486. UNLESS OTHERWISE NOTED			
487. UNLESS OTHERWISE NOTED			
488. UNLESS OTHERWISE NOTED			
489. UNLESS OTHERWISE NOTED			
490. UNLESS OTHERWISE NOTED			
491. UNLESS OTHERWISE NOTED			
492. UNLESS OTHERWISE NOTED			
493. UNLESS OTHERWISE NOTED			
494. UNLESS OTHERWISE NOTED			
495. UNLESS OTHERWISE NOTED			
496. UNLESS OTHERWISE NOTED			
497. UNLESS OTHERWISE NOTED			
498. UNLESS OTHERWISE NOTED			
499. UNLESS OTHERWISE NOTED			
500. UNLESS OTHERWISE NOTED			
501. UNLESS OTHERWISE NOTED			
502. UNLESS OTHERWISE NOTED			
503. UNLESS OTHERWISE NOTED			
504. UNLESS OTHERWISE NOTED			
505. UNLESS OTHERWISE NOTED			
506. UNLESS OTHERWISE NOTED			
507. UNLESS OTHERWISE NOTED			
508. UNLESS OTHERWISE NOTED			
509. UNLESS OTHERWISE NOTED			
510. UNLESS OTHERWISE NOTED			
511. UNLESS OTHERWISE NOTED			
512. UNLESS OTHERWISE NOTED			
513. UNLESS OTHERWISE NOTED			
514. UNLESS OTHERWISE NOTED			
515. UNLESS OTHERWISE NOTED			
516. UNLESS OTHERWISE NOTED			
517. UNLESS OTHERWISE NOTED			
518. UNLESS OTHERWISE NOTED			
519. UNLESS OTHERWISE NOTED			
520. UNLESS OTHERWISE NOTED			
521. UNLESS OTHERWISE NOTED			
522. UNLESS OTHERWISE NOTED			
523. UNLESS OTHERWISE NOTED			
524. UNLESS OTHERWISE NOTED			
525. UNLESS OTHERWISE NOTED			
526. UNLESS OTHERWISE NOTED			
527. UNLESS OTHERWISE NOTED			
528. UNLESS OTHERWISE NOTED			
529. UNLESS OTHERWISE NOTED			
530. UNLESS OTHERWISE NOTED			
531. UNLESS OTHERWISE NOTED			
532. UNLESS OTHERWISE NOTED			
533. UNLESS OTHERWISE NOTED			
534. UNLESS OTHERWISE NOTED			
535. UNLESS OTHERWISE NOTED			
536. UNLESS OTHERWISE NOTED			
537. UNLESS OTHERWISE NOTED			
538. UNLESS OTHERWISE NOTED			
539. UNLESS OTHERWISE NOTED			
540. UNLESS OTHERWISE NOTED			
541. UNLESS OTHERWISE NOTED			
542. UNLESS OTHERWISE NOTED			
543. UNLESS OTHERWISE NOTED			
544. UNLESS OTHERWISE NOTED			
545. UNLESS OTHERWISE NOTED			
546. UNLESS OTHERWISE NOTED			
547. UNLESS OTHERWISE NOTED			
548. UNLESS OTHERWISE NOTED			
549. UNLESS OTHERWISE NOTED			
550. UNLESS OTHERWISE NOTED			
551. UNLESS OTHERWISE NOTED			
552. UNLESS OTHERWISE NOTED			
553. UNLESS OTHERWISE NOTED			
554. UNLESS OTHERWISE NOTED			
555. UNLESS OTHERWISE NOTED			
556. UNLESS OTHERWISE NOTED			
557. UNLESS OTHERWISE NOTED			
558. UNLESS OTHERWISE NOTED			
559. UNLESS OTHERWISE NOTED			
560. UNLESS OTHERWISE NOTED			
561. UNLESS OTHERWISE NOTED			
562. UNLESS OTHERWISE NOTED			
563. UNLESS OTHERWISE NOTED			
564. UNLESS OTHERWISE NOTED			
565. UNLESS OTHERWISE NOTED			
566. UNLESS OTHERWISE NOTED			
567. UNLESS OTHERWISE NOTED			
568. UNLESS OTHERWISE NOTED			
569. UNLESS OTHERWISE NOTED			
570. UNLESS OTHERWISE NOTED			
571. UNLESS OTHERWISE NOTED			
572. UNLESS OTHERWISE NOTED			
573. UNLESS OTHERWISE NOTED			
574. UNLESS OTHERWISE NOTED			
575. UNLESS OTHERWISE NOTED			
576. UNLESS OTHERWISE NOTED			
577. UNLESS OTHERWISE NOTED			
578. UNLESS OTHERWISE NOTED			
579. UNLESS OTHERWISE NOTED			
580. UNLESS OTHERWISE NOTED			
581. UNLESS OTHERWISE NOTED			
582. UNLESS OTHERWISE NOTED			
583. UNLESS OTHERWISE NOTED			
584. UNLESS OTHERWISE NOTED			
585. UNLESS OTHERWISE NOTED			
586. UNLESS OTHERWISE NOTED			



Tel: 817-923-1965  
Fax: 817-927-8002

Plant & Offices  
2935 St. Louis Ave  
P.O. Box 6479  
Ft. Worth, TX 76115-0479

#### OFFER OF SALE

The items described in this document are hereby offered for sale at prices to be established by Hydraulics inc. and its authorized distributors. This offer and its acceptance by any customer ("Buyer") shall be governed by all the following Terms and Conditions. Buyer's order for any item described in this document, when communicated to Hydraulics inc., or any authorized distributor ("Seller") verbally or in writing, shall constitute acceptance of this offer.

**1. Terms and Conditions of Sale:** All descriptions, quotations, proposals, offers, acknowledgments, acceptances and sales of sellers products are subject to and shall be governed exclusively by the terms and conditions stated herein. Buyers acceptance of any offer to sell is limited to these terms and conditions. Any terms and conditions in addition to, or inconsistent with those stated herein, proposed by the Buyer in any acceptance of an offer by Seller, are hereby objected to. No other such additional, different or inconsistent terms and conditions shall become a part of the contract between Buyer and seller unless expressly accepted in writing by Seller. Sellers acceptance of any offer to purchase by Buyer is expressly conditional upon Buyer's assent to all terms and conditions stated herein, including any terms in addition to, or inconsistent with those contained in the Buyers offer. Acceptance of Sellers products shall in all events constitute such assent.

**2. Payment:** Payment for goods purchased by Buyer shall be due in 30 days from date of shipment with 1/2 % discount off goods purchased if paid in 10 days from the date of shipment. Buyer claims for omissions or shortages in a shipment shall be waived unless Seller receives notice thereof within 30 days after Buyer's receipt of the shipment.

**3. Delivery:** Delivery shall be made F.O.B. sellers plant, Ft. Worth TX. Regardless of the method of delivery, however, risk of loss shall pass to the Buyer upon Seller's delivery to the carrier. Any delivery dates shown are approximate only and seller shall have no liability for any delays in delivery. All offers and payments are in U.S.A. dollars.

**4. Warranty:** Seller warrants that the items sold hereunder shall be free from defects in material and workmanship for a period of 365 days from the date of shipment to Buyer. THIS WARRANTY COMPRISES THE SOLE AND ENTIRE WARRANTY PERTAINING TO ITEMS PROVIDED HEREUNDER. SELLER MAKES NO OTHER WARRANTY, GUARANTEE, OR REPRESENTATION OF ANY KIND WHATSOEVER. ALL OTHER WARRANTIES, INCLUDING BUT NOT LIMITED TO, MERCHANTABILITY AND FITNESS FOR PURPOSE WHETHER EXPRESS, IMPLIED, OR ARISING BY OPERATION OF LAW, TRADE USAGE, OR COURSE OF DEALING ARE HEREBY DISCLAIMED.

**5. Limitation Of Remedy:** SELLER'S LIABILITY ARISING FROM OR IN ANY WAY CONNECTED WITH THE ITEMS SOLD OR THIS CONTRACT SHALL BE LIMITED EXCLUSIVELY TO REPAIR OR REPLACEMENT OF THE ITEMS SOLD OR REFUND OF THE PURCHASE PRICE PAID BY BUYER, AT SELLER'S SOLE OPTION. IN NO EVENT SHALL SELLER BE LIABLE FOR ANY INCIDENTAL, CONSEQUENTIAL OR SPECIAL DAMAGES OF ANY KIND OR NATURE WHATSOEVER, INCLUDING BUT NOT LIMITED TO LOST PROFITS ARISING FROM OR IN ANY WAY CONNECTED WITH THIS AGREEMENT OR ITEMS SOLD HEREUNDER, WHETHER ALLEGED TO ARISE FROM BREACH OF CONTRACT, EXPRESS OR IMPLIED WARRANTY, OR IN TORT, INCLUDING WITHOUT LIMITATION, NEGLIGENCE, FAILURE TO WARN OR STRICT LIABILITY.

**6. Changes, Reschedules and Cancellations:** Buyer may request to modify the designs or specifications for the items sold hereunder as well as the quantities and delivery dates thereof, or may request to cancel all or part of this

order, however, no such requested modification or cancellation shall become part of the contract between the Buyer and Seller unless accepted by the Seller in a written amendment to this Agreement. Acceptance of any such requested modification or cancellation shall be at the Seller's discretion, and shall be upon such terms and conditions as Seller may require.

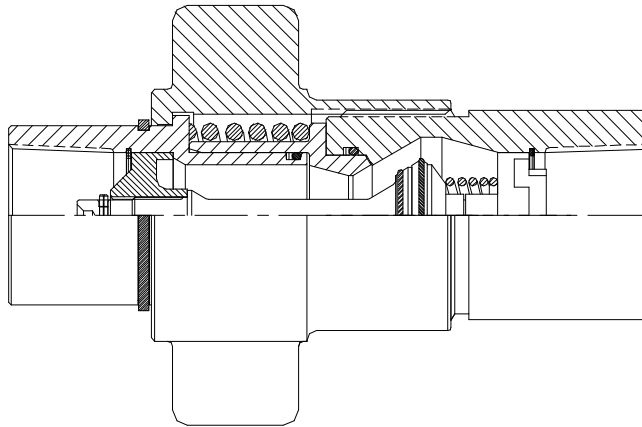
**7. Returns:** Buyer may request to return items sold hereunder, however no such requests shall become part of the contract between Buyer and Seller unless accepted by the Seller in a written amendment to this Agreement.

**8. Taxes:** Unless otherwise indicated on the face hereof, all prices and charges are exclusive of excise, sales, use, property, occupational or like taxes which may be imposed by any taxing authority upon the manufacture, sale or delivery of the items sold hereunder. If any such tax must be paid by the Seller or if Seller is liable for the collection of such tax, the amount thereof shall be in addition to the amounts of the items sold. Buyer agrees to pay all such taxes or to reimburse Seller therefore upon receipt of its invoice. If Buyer claims exemption from any sales, use or other tax imposed by any taxing authority, Buyer shall save Seller harmless from against such tax, together with any interest or penalties thereon which may be assessed if the items are held to be taxable.

**9. Force Majeure:** Seller does not assume the risk of and shall not be liable for delay or failure to perform any of Seller's obligations by reason of circumstances beyond control of Seller (hereinafter events of Force Majeure). Events of Force Majeure shall include without limitation, accidents, acts of God, strikes or labor disputes, acts, laws, rules or regulations of any government agency, fires, floods, delays or failures in delivery of carriers or suppliers, shortages of materials and any other cause beyonds Seller's control.

**10. Entire Agreement / Governing Law:** The terms and conditions set forth herein, together with any amendments, modifications and any terms or conditions expressly accepted by Seller in writing, shall constitute the entire Agreement concerning the items sold, and there are no oral or other representations or agreements which pertain thereto. This agreement shall be governed in all respects by the law of the State of Texas. No actions arising out of sale of the items sold hereunder or this Agreement may be brought by either party more than two (2) years after the cause of the action accrues.

**E15TV SERIES  
BULK FLUID TRANSFER  
QUICK CONNECT COUPLING**



信德迈科技(北京)有限公司 CNMEC Technology Company  
地址：北京市朝阳区望京SOHO-T1-C座2115室邮编：100102  
\*Tel: 010-8428 2935 | \* Fax: 010-8428 8762  
\*手机：139 1096 2635 (微信同号)  
\*电子邮件：sales@cnmec.biz  
主页：http://www.cnmec.biz

**CONTACT OUR FORT WORTH OFFICE FOR ADDITIONAL PRODUCT  
INFORMATION   ☐ ASK FOR OUR NEAREST STOCKING DISTRIBUTOR**

