

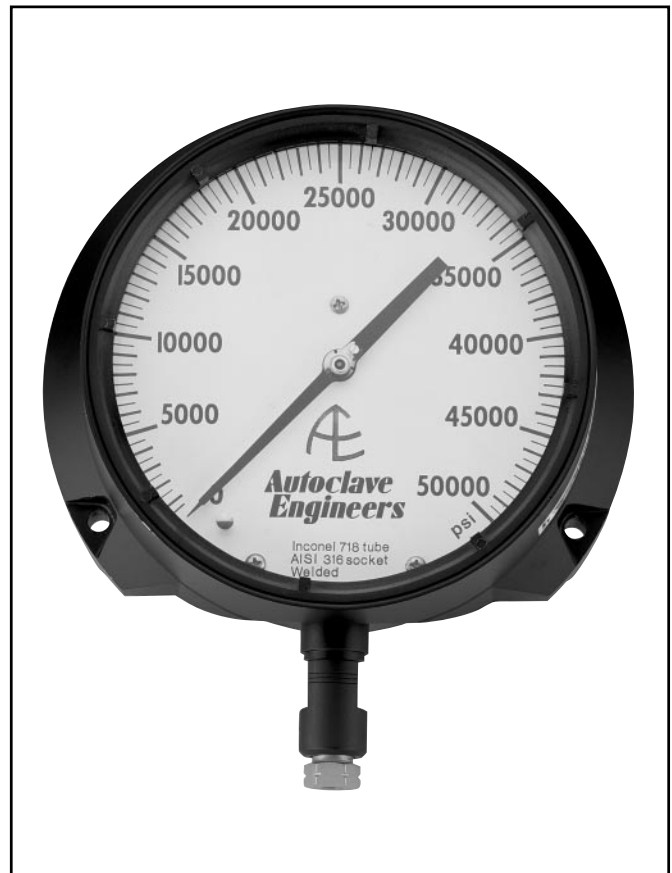
# Accessories - Instrument Quality Pressure Gauges

## Pressures to 80,000 psi (5116 bar)

**Gauges** - Pressure gauges are offered for use in low, medium and high pressure systems. Instrument quality gauges are available with pressure to 80,000 psi (5115.7 bar).

### *Materials and Features*

- Accuracy within  $\pm 0.5\%$  of full scale range.
- Plastic dial cover/solid front aluminum alloy case.
- Blow-out back panel for pressure relief in the event of Bourdon tube failure.
- 316 Stainless steel Bourdon tubes\*\*
- Precision stainless steel movement for accuracy and resistance to atmospheric corrosion.
- Pointer zero adjustment located on front of gauge behind dial cover for convenience
- Gauges are commercially cleaned when shipped.
- Gauges available oxygen cleaned upon request.
- Gauges glycerin filled upon request.
- Gauges available with dual scale face plates.



### *Instrument quality gauges*

- **Flush panel mounting** - Interchangeable dial cover retaining rings are stocked to permit flush panel mounting of any instrument quality gauge. These will be furnished at an additional charge when specified - add "PM" to order number.
- **Optional electrical contact face** - Available for all instrument quality gauges. With adjustable low and high electrical contacts, this option permits gauges to provide pressure control for automatic or remote operation, or for fail-safe set points.

\*\*Bourdon tube material for 0-30,000 psi (0-2068 bar) gauge is K Monel. Bourdon tube material for 0-50,000 psi (0-3447 bar) and 0-80,000 psi (0-5116 bar) gauge is Inconel 718.



Note: Gauge connections are 1/4" (F250C) coned-and-threaded connection. Furnished with collar and gland.

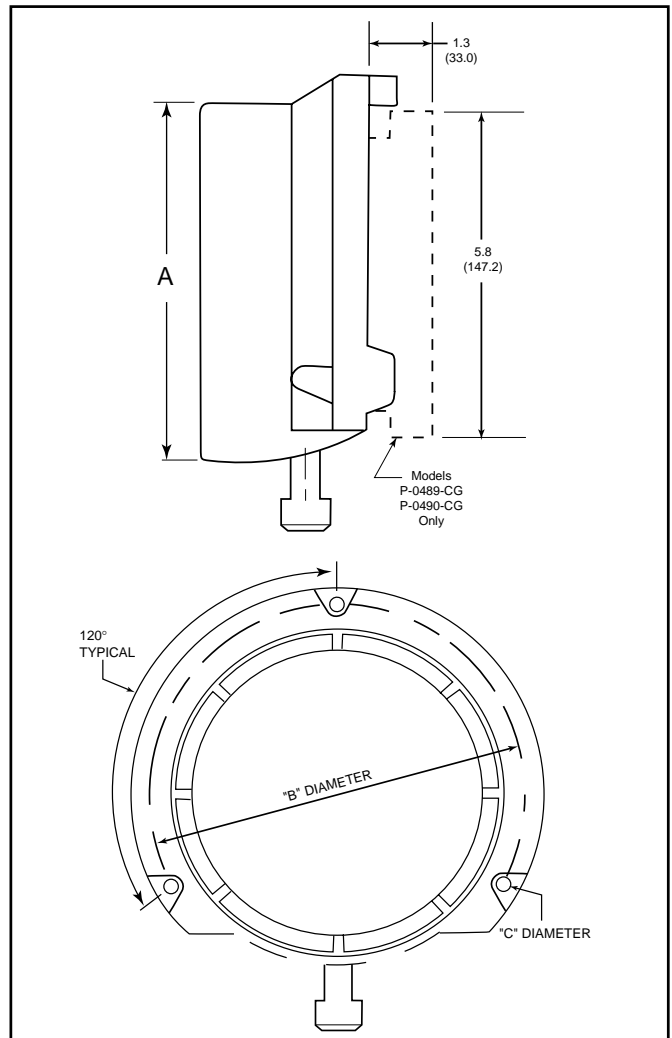
Calibrated in psi Only

Catalog Number	Pressure Range psi (bar)	Minor Interval Value psi (bar)	Dial Diameter inches (mm)
P-0499-CG	0-1,000 (0-69)	10 (.69)	4 1/2 (114.3)
P-0479-CG	0-1,500 (0-103)	10 (.69)	4 1/2 (114.3)
P-0480-CG	0-3,000 (0-207)	20 (1.38)	4 1/2 (114.3)
P-0481-CG	0-5,000 (0-345)	50 (3.44)	4 1/2 (114.3)
P-0482-CG	0-10,000 (0-690)	100 (6.89)	4 1/2 (114.3)
P-0483-CG	0-15,000 (0-1034)	100 (6.89)	4 1/2 (114.3)
P-0487-CG	0-20,000 (0-1379)	200 (13.79)	4 1/2 (114.3)
P-0488-CG**	0-30,000 (0-2068)	200 (13.79)	6 (152.4)
P-0489-CG**	0-50,000 (0-3447)	500 (34.47)	6 (152.4)
P-0490-CG**	0-80,000 (0-5116)	1,000 (68.94)	6 (152.4)

Optional Electrical Contact Face

Catalog Number	Fits Gauge Dial Diameter inches - (mm)
P-0713	4 1/2 (114.3)
P-0714	6 (152.4)

\*\* Bourdon tube material for 0-30,000 psi (0-2068 bar) gauge is K Monel. Bourdon tube material for 0-50,000 psi (0-3447 bar) and 0-80,000 psi (0-5116 bar) gauge is Inconel 718.



Gauge Size inches - (mm)	"A" cutout inches - (mm)	"B" inches - (mm)	"C" inches - (mm)
4 1/2" (114.3)	4.937 (125.39)	5.375 (136.52)	.281 (7.14)
6" (152.4)	6.437 (163.49)	7.0 (177.80)	.281 (7.14)

All general terms and conditions of sale, including limitations of our liability, apply to all products and services sold.