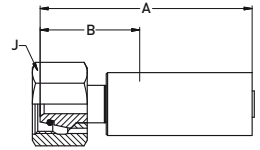


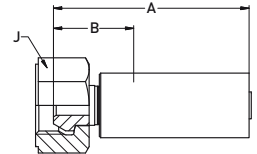
1C9KX – Metric female swivel heavy series with O-ring



MATERIAL Carbon steel, zinc plated

#						A	B				Nipple ID	Ferrule OD
	DN	size	mm	inch					mm	mm		
1C9KX-10-04W	6	-04	6.4	1/4	M18x1.5	68	36	22	110	15,950	4.0	17.4
1C9KX-16-05W	8	-05	7.9	5/16	M24x1.5	77	38	30	100	14,500	5.3	20.2

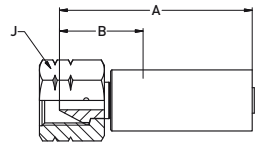
192KX – BSP female swivel (60° cone)



MATERIAL Carbon steel, zinc plated

#						A	B				Nipple ID	Ferrule OD
	DN	size	mm	inch					mm	mm		
192KX-4-04W	6	-04	6.4	1/4	G 1/4	56	25	19	110	15,950	4.0	17.4
192KX-6-05W	8	-05	7.9	5/16	G 3/8	64	25	27	100	14,500	5.3	20.2

1AYKX – Type “M” female swivel



MATERIAL Carbon steel, zinc plated

#						A	B				Nipple ID	Ferrule OD
	DN	size	mm	inch					mm	mm		
1AYKX-6-04W	6	-04	6.4	1/4	9/16 - 18UNF	61	30	22	110	15,950	4.0	17.4
1AYKX-8-05W	8	-05	7.9	5/16	3/4 - 16UNF	70	31	27	100	14,500	5.3	20.2

Design Factor >2:1