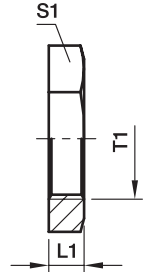


## GM Locknut for bulk heads

For bulkhead SV and WSV

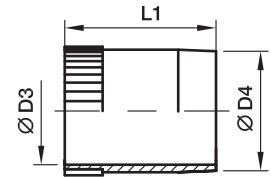


Series	Tube O.D.	T1	L1	S1	Weight g/1 piece	Order code		
						Steel CF	Stainless Steel 71	Brass MS
L <sup>3)</sup>	06	M 12×1.5	6	17	7	GM06LCFX	GM06L71X	GM06LMSX
	08	M 14×1.5	6	19	8	GM08LCFX	GM08L71X	GM08LMSX
	10	M 16×1.5	6	22	11	GM10LCFX	GM10L71X	GM10LMSX
	12	M 18×1.5	6	24	12	GM12LCFX	GM12L71X	GM12LMSX
	15	M 22×1.5	7	30	23	GM15LCFX	GM15L71X	GM15LMSX
	18	M 26×1.5	8	36	37	GM18LCFX	GM18L71X	GM18LMSX
	22	M 30×2.0	8	41	46	GM22LCFX	GM22L71X	GM22LMSX
	28	M 36×2.0	9	46	58	GM28LCFX	GM28L71X	GM28LMSX
	35	M 45×2.0	9	55	71	GM35LCFX	GM35L71X	GM35LMSX
	42	M 52×2.0	10	65	123	GM42LCFX	GM42L71X	GM42LMSX
S <sup>4)</sup>	06	M 14×1.5	6	19	8	GM08LCFX	GM08L71X	GM06LMSX
	08	M 16×1.5	6	22	11	GM10LCFX	GM10L71X	GM10LMSX
	10	M 18×1.5	6	24	12	GM12LCFX	GM12L71X	GM12LMSX
	12	M 20×1.5	6	27	15	GM12SCFX	GM12S71X	GM12SMSX
	16	M 24×1.5	7	32	24	GM16SCFX	GM16S71X	GM16SMSX
	20	M 30×2.0	8	41	46	GM22LCFX	GM22L71X	GM22LMSX
	25	M 36×2.0	9	46	58	GM28LCFX	GM28L71X	GM28LMSX
	30	M 42×2.0	9	50	58	GM30SCFX	GM30S71X	GM30SMSX
	38	M 52×2.0	10	65	123	GM42LCFX	GM42L71X	GM42LMSX

<sup>3)</sup> L = light series; <sup>4)</sup> S = heavy series

## VH Support sleeve

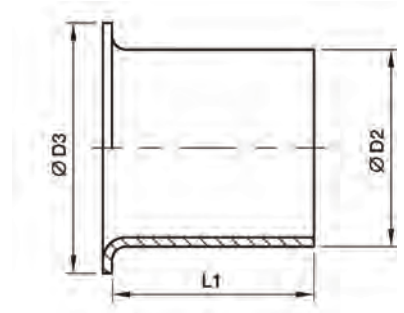
for thin-walled metal tubing



Tube I.D.	D3	D4	L1	Weight g/1 piece	Order code		
					Steel CF	Stainless Steel 71	Brass MS
4.00	2.6	3.8	14.0	0.7	VH04CFX	VH0471X	VH04MSX
4.50	3.1	4.3	14.0	0.8	VH04.5CFX	VH04.571X	VH04.5MSX
5.00	3.6	4.8	14.0	0.8	VH05CFX	VH0571X	VH05MSX
6.00	4.6	5.8	14.0	1.0	VH06CFX	VH0671X	VH06MSX
6.50	5.1	6.3	14.0	1.0	VH06.5CFX	VH06.571X	VH06.5MSX
7.00	5.6	6.8	15.5	1.3	VH07CFX	VH0771X	VH07MSX
8.00	6.6	7.8	15.5	1.6	VH08CFX	VH0871X	VH08MSX
9.00	7.6	8.8	15.5	1.8	VH09CFX	VH0971X	VH09MSX
10.00	8.6	9.8	15.5	2.1	VH10CFX	VH1071X	VH10MSX
10.05	8.6	9.8	15.5	2.1	VH10.05CFX	VH10.0571X	VH10.05MSX
10.50	9.1	10.3	15.5	2.3	VH10.5CFX	VH10.571X	VH10.5MSX
11.00	9.6	10.8	15.5	2.6	VH11CFX	VH1171X	VH11MSX
12.00	10.2	11.8	17.0	3.7	VH12CFX	VH1271X	VH12MSX
12.95	11.2	12.8	17.0	3.9	VH12.95CFX	VH12.9571X	VH12.95MSX
13.00	11.2	12.8	17.0	3.9	VH13CFX	VH1371X	VH13MSX
14.00	12.2	13.8	17.0	4.3	VH14CFX	VH1471X	VH14MSX
15.00	13.2	14.8	20.0	5.7	VH15CFX	VH1571X	VH15MSX
16.00	14.2	15.8	20.0	5.8	VH16.00CFX	VH16.0071X	VH16.00MSX
16.20	14.2	15.8	20.0	5.8	VH16CFX	VH1671X	VH16MSX
17.00	15.2	16.8	20.0	6.3	VH17CFX	VH1771X	VH17MSX
18.00	16.2	17.8	20.0	6.3	VH18CFX	VH1871X	VH18MSX
19.00	17.2	18.8	16.0	5.8	VH19CFX	VH1971X	VH19MSX
19.90	18.2	19.8	21.5	7.9	VH19.90CFX	VH19.9071X	VH19.90MSX
20.00	18.2	19.8	21.5	7.9	VH20CFX	VH2071X	VH20MSX
21.00	19.2	20.8	21.5	8.0	VH21CFX	VH2171X	VH21MSX
22.00	20.2	21.8	23.5	9.7	VH22CFX	VH2271X	VH22MSX
23.00	21.2	22.8	23.5	10.6	VH23CFX	VH2371X	VH23MSX
24.00	22.2	23.8	23.5	11.1	VH24CFX	VH2471X	VH24MSX
24.90	23.3	24.8	23.5	10.8	VH24.90CFX	VH24.9071X	VH2490MSX
25.00	23.2	24.8	23.5	10.8	VH25CFX	VH2571X	VH25MSX
26.00	24.2	25.8	23.5	12.7	VH26CFX	VH2671X	VH26MSX
27.00	25.2	26.8	23.5	12.2	VH27CFX	VH2771X	VH27MSX
30.00	27.8	29.8	26.5	18.7	VH30CFX	VH3071X	VH30MSX
31.00	28.8	30.8	26.5	20.7	VH31CFX	VH3171X	VH31MSX
32.00	29.8	31.8	26.5	19.2	VH32CFX	VH3271X	VH32MSX
32.10	29.8	31.8	26.5	19.2	VH32.10CFX	VH32.1071X	VH32.10MSX
33.00	30.8	32.8	26.5	19.9	VH33CFX	VH3371X	VH33MSX
34.00	31.8	33.8	26.5	26.5	VH34CFX	VH3471X	VH34MSX
37.80	35.8	37.7	31.0	19.5	VH37.8CFX	VH37.871X	VH37.8MSX
38.00	35.8	37.8	21.0	19.7	VH38CFX	VH3871X	VH38MSX
39.00	36.8	38.8	21.0	19.5	VH39CFX	VH3971X	VH39MSX

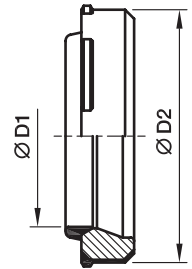
## E Tube/hose insert

for plastic tubing



Tube O.D.	Tube I.D.	D2	D3	L1	Weight g/1 piece	Order code Brass
04	2.0	2.0	3.5	8	1	E04/02X
04	2.5	2.5	4.0	8	1	E04/2.5X
05	3.0	3.0	5.0	14	1	E0506/03X
06	3.0	3.0	5.0	14	1	E0506/03X
05	4.0	4.0	5.0	14	1	E0506/04X
06	4.0	4.0	5.0	14	1	E0506/04X
08	4.0	4.0	6.6	14	1	E08/04X
06	5.0	5.0	6.0	14	1	E06/05X
08	5.0	5.0	6.0	14	1	E08/05X
10	6.0	6.0	8.0	15	1	E0810/06X
08	6.0	6.0	8.0	15	1	E0810/06X
10	8.0	8.0	10.0	15	1	E10/08X
12	8.0	8.0	12.0	15	2	E12/08X
12	9.0	9.0	12.0	15	2	E12/09X
12	10.0	10.0	12.0	15	2	E1215/10X
15	12.0	12.0	14.8	15	3	E15/12X
15	12.5	12.5	14.8	15	3	E1516/12.5X
16	12.5	12.5	14.8	15	3	E1516/12.5X
18	14.0	14.0	17.8	15	4	E18/14X
18	16.0	16.0	17.8	20	4	E1820/16X
20	16.0	16.0	17.8	20	4	E1820/16X
22	18.0	18.0	21.8	16	5	E22/18X

## DOZ EO-2 Soft sealing ring



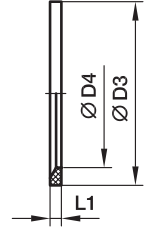
**Assembly direction:**  
Sealing lip shows to the tube end

Series	D1 	D2	Weight g/1 piece	Order code			
				Steel NBR	Steel FKM	Stainless Steel FKM	Stainless Steel NBR
LL <sup>2)</sup>	04	6.8	1	DOZ04LL	—	—	—
	06	8.8	1	DOZ06LL	—	—	—
L <sup>3)</sup>	06	10.3	1	DOZ06L	DOZ06LVIT	DOZ06L71	DOZ06LNBR71
	08	12.3	1	DOZ08L	DOZ08LVIT	DOZ08L71	DOZ08LNBR71
	10	14.3	2	DOZ10L	DOZ10LVIT	DOZ10L71	DOZ10LNBR71
	12	16.3	2	DOZ12L	DOZ12LVIT	DOZ12L71	DOZ12LNBR71
	15	20.3	3	DOZ15L	DOZ15LVIT	DOZ15L71	DOZ15LNBR71
	18	24.3	5	DOZ18L	DOZ18LVIT	DOZ18L71	DOZ18LNBR71
	22	27.7	6	DOZ22L	DOZ22LVIT	DOZ22L71	DOZ22LNBR71
	28	33.7	7	DOZ28L	DOZ28LVIT	DOZ28L71	DOZ28LNBR71
	35	42.7	14	DOZ35L	DOZ35LVIT	DOZ35L71	DOZ35LNBR71
	42	49.7	17	DOZ42L	DOZ42LVIT	DOZ42L71	DOZ42LNBR71
S <sup>4)</sup>	06	12.3	2	DOZ06S	DOZ06SVIT	DOZ06S71	DOZ06SNBR71
	08	14.3	2	DOZ08S	DOZ08SVIT	DOZ08S71	DOZ08SNBR71
	10	16.3	3	DOZ10S	DOZ10SVIT	DOZ10S71	DOZ10SNBR71
	12	18.3	4	DOZ12S	DOZ12SVIT	DOZ12S71	DOZ12SNBR71
	16	22.3	5	DOZ16S	DOZ16SVIT	DOZ16S71	DOZ16SNBR71
	20	27.7	9	DOZ20S	DOZ20SVIT	DOZ20S71	DOZ20SNBR71
	25	33.7	13	DOZ25S	DOZ25SVIT	DOZ25S71	DOZ25SNBR71
	30	39.7	18	DOZ30S	DOZ30SVIT	DOZ30S71	DOZ30SNBR71
38	49.7	27	DOZ38S	DOZ38SVIT	DOZ38S71	DOZ38SNBR71	

<sup>2)</sup> LL = very light series; <sup>3)</sup> L = light series; <sup>4)</sup> S = heavy series

## ED Eolastic soft seal (for BSPP and metric parallel threads)

For Type: GE...ED, EGE...ED, EVGE...ED, EW...ED, EV...ED, ET...ED, EL...ED, VSTI...ED, RI...ED

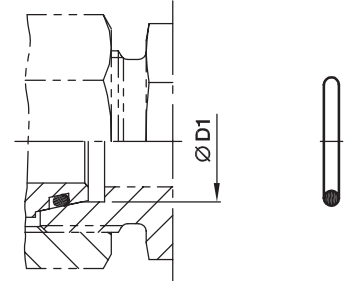


Male stud metric thread T1	Male stud BSP thread T1	D3	D4	L1	Weight g/1 piece	Order code NBR	Order code FKM
M 08×1.0		9.9	6.5	1.0	0.1	<b>ED8X1X</b>	<b>ED8X1VITX</b>
M 10×1.0	G 1/8 A	11.9	8.4	1.0	0.1	<b>ED10X1X</b>	<b>ED10X1VITX</b>
M 12×1.5		14.4	9.8	1.5	0.2	<b>ED12X1.5X</b>	<b>ED12X1.5VITX</b>
M 14×1.5	G 1/4 A	16.5	11.6	1.5	0.2	<b>ED14X1.5X</b>	<b>ED14X1.5VITX</b>
M 16×1.5		18.9	13.8	1.5	0.1	<b>ED16X1.5X</b>	<b>ED16X1.5VITX</b>
	G 3/8 A	18.9	14.7	1.5	0.2	<b>ED3/8X</b>	<b>ED3/8VITX</b>
M 18×1.5		20.9	15.7	1.5	0.1	<b>ED18X1.5X</b>	<b>ED18X1.5VITX</b>
M 20×1.5		22.9	17.8	1.5	0.2	<b>ED20X1.5X</b>	<b>ED20X1.5VITX</b>
	G 1/2 A	23.9	18.5	1.5	0.3	<b>ED1/2X</b>	<b>ED1/2VITX</b>
M 22×1.5		24.3	19.6	1.5	0.2	<b>ED22X1.5X</b>	<b>ED22X1.5VITX</b>
M 26×1.5	G 3/4 A	29.2	23.9	1.5	0.4	<b>ED26X1.5X</b>	<b>ED26X1.5VITX</b>
M 27×2.0	G 3/4 A	29.2	23.9	1.5	0.4	<b>ED26X1.5X</b>	<b>ED26X1.5VITX</b>
M 33×2.0	G 1 A	35.7	29.7	2.0	0.7	<b>ED33X2X</b>	<b>ED33X2VITX</b>
M 42×2.0	G 1 1/4 A	45.8	38.8	2.0	0.9	<b>ED42X2X</b>	<b>ED42X2VITX</b>
M 48×2.0	G 1 1/2 A	50.7	44.7	2.0	1.0	<b>ED48X2X</b>	<b>ED48X2VITX</b>

## OR O-Ring for fittings with EO 24° DKO swivel

For Type:

DA, EGE, EGEO, MAVE, EW, EV, ET, EL, RED, GZ, GZR, VKA, VKAM

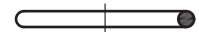
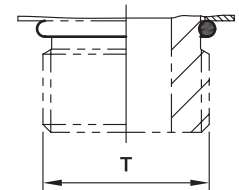


Series	D1 	O-ring NBR Shore-hardness approx. 90	O-ring FKM Shore-hardness approx. 90
L <sup>3)</sup>	6	OR4.5X1.5X	OR4.5X1.5VITX
	8	OR6.5X1.5X	OR6.5X1.5VITX
	10	OR8.5X1.5X	OR8X1.5VITX
	12	OR10.5X1.5X	OR10X1.5VITX
	15	OR12.5X2X	OR12X2VITX
	18	OR16X2X	OR15X2VITX
	22	OR20X2X	OR20X2VITX
	28	OR26X2X	OR26X2VITX
	35	OR32X2.5X	OR32X2.5VITX
	42	OR39X2.5X	OR38X2.5VITX
S <sup>4)</sup>	6	OR4.5X1.5X	OR4.5X1.5VITX
	8	OR6.5X1.5X	OR6.5X1.5VITX
	10	OR8.5X1.5X	OR8X1.5VITX
	12	OR10.5X1.5X	OR10X1.5VITX
	16	OR14X2X	OR13X2VITX
	20	OR17X2.5X	OR16.3X2.4VITX
	25	OR22X2.5X	OR20.3X2.4VITX
	30	OR27X2.5X	OR25.3X2.4VITX
	38	OR35X2.5X	OR33.3X2.4VITX

<sup>3)</sup> L = light series; <sup>4)</sup> S = heavy series

## OR O-rings for male stud ends

Male metric thread – O-ring (ISO 6149)  
 Male UN/UNF thread – O-ring (ISO 11926)



Types with metric thread:  
 VSTI-OR, GEO, EGEO

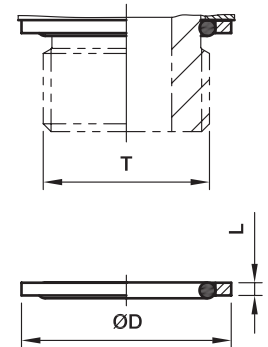
Thread T	O-ring NBR	O-ring FKM
M 08×1.0	<b>OR6.1X1.6</b>	<b>OR6.1X1.6VITX</b>
M 10×1.0	<b>OR8.1X1.6</b>	<b>OR8.1X1.6VITX</b>
M 12×1.5	<b>OR9.3X2.2</b>	<b>OR9.3X2.2VITX</b>
M 14×1.5	<b>OR11.3X2.2</b>	<b>OR11.3X2.2VITX</b>
M 16×1.5	<b>OR13.3X2.2</b>	<b>OR13.3X2.2VITX</b>
M 18×1.5	<b>OR15.3X2.2</b>	<b>OR15.3X2.2VITX</b>
M 22×1.5	<b>OR19.3X2.2</b>	<b>OR19.3X2.2VITX</b>
M 27×2.0	<b>OR23.6X2.9</b>	<b>OR23.6X2.9VITX</b>
M 33×2.0	<b>OR29.6X2.9</b>	<b>OR29.6X2.9VITX</b>
M 42×2.0	<b>OR38.6X2.9</b>	<b>OR38.6X2.9VITX</b>
M 48×2.0	<b>OR44.6X2.9</b>	<b>OR44.6X2.9VITX</b>

Types with UN/UNF thread:  
 GE-UNF

Thread T	O-ring NBR	O-ring FKM
7/16-20 UNF	<b>OR8.92X1.83</b>	<b>OR8.92X1.83VITX</b>
9/16-18 UNF	<b>OR11.89X1.98</b>	<b>OR11.89X1.98VITX</b>
3/4-16 UNF	<b>OR16.36X2.21</b>	<b>OR16.36X2.21VITX</b>
7/8-14 UNF	<b>OR19.18X2.46</b>	<b>OR19X2.5VITX</b>
1 1/16-12 UN	<b>OR23.47X2.95</b>	<b>OR23.47X2.95VITX</b>
1 5/16-12 UN	<b>OR29.74X2.95</b>	<b>OR29.74X2.95VITX</b>
1 5/8-12 UN	<b>OR37.46X3</b>	<b>OR37.46X3VITX</b>
1 7/8-12 UN	<b>OR43.69X3</b>	<b>OR43.69X3VITX</b>

## OR O-rings and retaining rings for male stud ends

Adjustable BSPP thread – O-ring + retaining ring (ISO 1179)



Types with BSPP thread: WEE-R

Thread T	O-ring NBR	Steel			O-ring FKM	Stainless Steel		
		D	L	Order code Retaining ring CF		D	L	Order code Retaining ring Stainless Steel
G 1/8 A	<b>OR8X1.88X</b>	14.8	1.4	<b>RRS1/8CF</b>	same like steel	15.0	1.4	<b>8207SS1/8</b>
G 1/4 A	<b>OR10.77X2.62X</b>	19.8	1.9	<b>RRS1/4CF</b>	<b>OR10.77X2.62VITX</b>	19.5	1.9	<b>8207SS1/4A</b>
G 3/8 A	<b>OR13.94X2.62X</b>	22.8	2.0	<b>RRS3/8CF</b>	same like steel	23.5	1.9	<b>8207SS3/8A</b>
G 1/2 A	<b>OR18X3.15X</b>	27.8	2.6	<b>RRS1/2CF</b>	<b>OR17.96X2.62VITX</b>	28.5	1.9	<b>8207SS1/2</b>
G 3/4 A	<b>OR23X3X</b>	32.8	2.5	<b>RRS3/4CF</b>	<b>OR23.47X2.62VITX</b>	34.5	1.9	<b>8207SS3/4</b>
G 1 A	<b>OR29.74X3.53X</b>	40.8	2.5	<b>RRS1CF</b>	same like steel	43.5	2.6	<b>8207SS1A</b>
G 1 1/4 A	<b>OR37.69X3.53X</b>	50.8	2.6	<b>RRS11/4CF</b>	same like steel	52.5	2.6	<b>8207SS11/4</b>
G 1 1/2 A	<b>OR44.04X3.53X</b>	55.8	2.6	<b>RRS11/2CF</b>	same like steel	60.0	2.6	<b>8207SS11/2</b>

Order code suffixes	
Material	Example
NBR	OR10.77X2.62X
FKM	OR10.77X2.62VITX

## OR O-Rings for banjo fittings WH/TH

For WH / TH	For WH / TH	O-ring NBR	O-ring FKM
06LM/LR		<b>OR9.3X1.5X</b>	<b>OR9.3X1.5VITX</b>
08LM/LR	06SM/SR	<b>OR12.5X1.5X</b>	<b>OR12.5X1.5VITX</b>
10LM/LR	08SM/SR	<b>OR12.5X1.5X</b>	<b>OR12.5X1.5VITX</b>
12LM/LR	10SM/SR	<b>OR16X1.5X</b>	<b>OR16X1.5VITX</b>
	12SR	<b>OR16X1.5X</b>	<b>OR16X1.5VITX</b>
15LM	12SM	<b>OR18X1.5X</b>	<b>OR18X1.5VITX</b>
15LR		<b>OR20X1.5X</b>	<b>OR20X1.5VITX</b>
18LM/LR	16SM/SR	<b>OR20X1.5X</b>	<b>OR20X1.5VITX</b>
22LM/LR	20SM/SR	<b>OR25X2X</b>	<b>OR25X2VITX</b>
28LM/LR	25SM/SR	<b>OR33X2.5X</b>	<b>OR33X2.5VITX</b>
35LM/LR	30SM/SR	<b>OR41X2.5X</b>	<b>OR41X2.5VITX</b>
42LM/LR	38SM/SR	<b>OR46X3X</b>	<b>OR46X3VITX</b>

## OR O-Rings for banjo elbows SWVE..M/R KDSOMD

For SWVE..M/R KDSOMD	O-ring NBR
04LLR/-   06LLR/LLM   08LLR/LLM   06LR/LM	<b>OR9X1.2X</b>
08LM   06SM	<b>OR10X1.5X</b>
08LR   06SR   10LR/LM   08SR/LM	<b>OR12.5X1.5X</b>
12LR/LM   10SR/LM   12SR	<b>OR15X1.5X</b>
15LM   12SM	<b>OR16X1.5X</b>
15LR	<b>OR19X1.5X</b>
18LR/LM   16SR/SM	<b>OR20X1.5X</b>
22LR/LM   20SR/SM	<b>OR25.12X1.78X</b>
28LR/LM   25SR/SM	<b>OR33X2.5X</b>
35LR/LM   30SR/SM	<b>OR41X2.5X</b>
42LR/LM   38SR/SM	<b>OR46X3.0X</b>

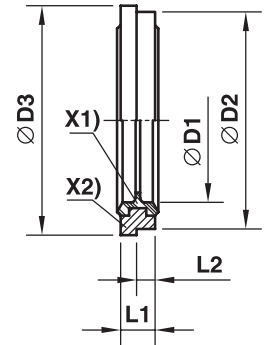
## DKI Sealing ring for pressure gauge connectors

Female thread	D1	D2	L1	Weight g/1 piece	Order code	
					Steel CF	Stainless Steel 71
G 1/4	6	11.3	4.5	2.5	<b>DKI1/4CFX</b>	<b>DKI1/471X</b>
G 1/2	12	18.5	5.0	5.0	<b>DKI1/2CFX</b>	<b>DKI1/271X</b>



## KDS Soft sealing ring for banjo fittings SWVE, WH and TH from steel

for small and wide spot faces of ports

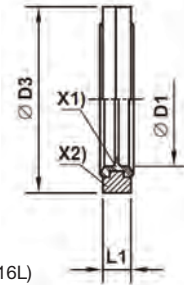


X1) NBR sealing  
X2) Supporting-ring (Steel)

Male stud metric thread	Male stud BSPP thread	D1	D2	D3	L1	L2	Weight g/1 piece	Order code
								Steel/NBR
M 10×1.0	G 1/8 A	10.3	14.9	16.0	2.5	1.1	2	<b>KDS10X</b>
M 12×1.5		12.3	17.0	18.0	3.0	1.6	2	<b>KDS12X</b>
M 14×1.5	G 1/4 A	14.3	18.9	20.0	3.0	1.6	2	<b>KDS14X</b>
M 16×1.5	G 3/8 A	17.0	21.9	24.0	3.0	2.1	3	<b>KDS16X</b>
M 18×1.5		18.3	23.9	23.9	3.0		4	<b>KDS18X</b>
M 22×1.5	G 1/2 A	22.3	26.9	30.0	4.5	2.6	7	<b>KDS22X</b>
M 26×1.5		26.3	31.9	35.0	3.5	2.6	7	<b>KDS26X</b>
M 27×2.0	G 3/4 A	27.3	32.9	38.0	3.5	2.6	8	<b>KDS27X</b>
M 33×2.0	G 1 A	33.6	39.9	42.0	3.5	2.6	10	<b>KDS33X</b>
M 42×2.0	G 1 1/4 A	42.4	49.9	49.9	3.5		12	<b>KDS42X</b>
M 48×2.0	G 1 1/2 A	48.4	55.9	60.0	3.5	2.6	16	<b>KDS48X</b>

## KD Soft sealing ring for banjo fittings WH/TH from stainless steel

for wide spot faces of ports

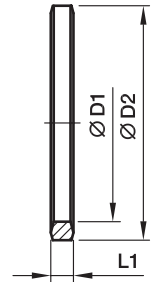


X1) Vulcanized FKM Seal  
X2) Supporting-ring (Stainless Steel 316L)

Metric thread parallel	BSPP thread parallel	D1	D3	L1	Weight g/1 piece	Order code Stainless steel FKM
M 10×1.0	G 1/8 A	10.3	17.0	2.5	3	<b>KD10-1/8SS</b>
M 12×1.5		12.3	22.0	3.0	5	<b>KD12SS</b>
M 14×1.5	G 1/4 A	14.3	22.0	3.0	5	<b>KD14-1/4SS</b>
M 16×1.5	G 3/8 A	17.0	27.0	3.0	6	<b>KD16-3/8SS</b>
M 18×1.5		18.3	29.0	3.0	8	<b>KD18SS</b>
M 22×1.5	G 1/2 A	22.3	32.0	4.5	12	<b>KD22-1/2SS</b>
M 26×1.5		26.3	41.0	3.5	18	<b>KD26SS</b>
M 27×2.0	G 3/4 A	27.3	41.0	3.5	19	<b>KD27-3/4SS</b>
M 33×2.0	G 1 A	33.6	46.0	3.5	18	<b>KD33-1SS</b>
M 42×2.0	G 1 1/4 A	42.4	57.0	3.5	26	<b>KD42-11/4SS</b>
M 48×2.0	G 1 1/2 A	48.4	64.0	3.5	35	<b>KD48-11/2SS</b>

## DKA Sealing ring

for banjo fittings WH/TH and SWVE



BSPP thread	D1	D2	L1	Weight g/1 piece	Order code	
					Steel CF	Stainless Steel 71
G 1/8 A	9.8	14	2.5	1	DKA1/8CFX	DKA1/871X
G 1/4 A	13.3	18	3.0	3	DKA1/4CFX	DKA1/471X
G 3/8 A	16.8	22	3.0	3	DKA3/8CFX	DKA3/871X
G 1/2 A	21.1	26	4.5	6	DKA1/2X4.5CFX	DKA1/2X4.571X
G 3/4 A	26.6	32	3.5	6	DKA3/4CFX	DKA3/471X
G 1 A	33.4	39	3.5	8	DKA1CFX	DKA171X
G 1 1/4 A	42.1	49	3.5	12	DKA11/4CFX	DKA11/471X
G 1 1/2 A	48.1	55	3.5	15	DKA11/2CFX	DKA11/271X

Male stud metric thread	D1	D2	L1	Weight g/1 piece	Order code	
					Steel CF	Stainless Steel 71
M 08×1.0	8.1	12	2.5	1	DKA08CFX	
M 10×1.0	10.1	14	3.0	1	DKA10CFX	DKA1071X
M 12×1.5	12.1	17	3.0	2	DKA12CFX	DKA1271X
M 14×1.5	14.1	19	3.0	3	DKA14CFX	DKA1471X
M 16×1.5	16.1	21	3.0	3	DKA16CFX	DKA1671X
M 18×1.5	18.1	23	3.0	3	DKA18CFX	DKA1871X
M 20×1.5	20.1	25	3.0	4	DKA20CFX	DKA2071X
M 22×1.5	22.1	27	4.5	6	DKA22X4.5CFX	DKA22X4.571X
M 26×1.5	26.1	31	3.5	6	DKA26X3.5CFX	DKA26X3.571X
M 27×2.0	27.1	32	3.5	6	DKA27CFX	DKA2771X
M 33×2.0	33.1	39	3.5	8	DKA33CFX	DKA3371X
M 42×2.0	42.1	49	3.5	12	DKA11/4CFX	DKA11/471X
M 48×2.0	48.1	55	3.5	15	DKA11/2CFX	DKA11/271X